

PARTS LIST

CAUTION

- The parts identified by the \triangle symbol are important for the safety . Whenever replacing these parts, be sure to use specified ones to secure the safety .
- The parts not indicated in this Parts List and those which are filled with lines --- in the Parts No. columns will not be supplied .
- P. W. Board Ass'y will not be supplied, but those which are filled with the Parts No. in the Parts No. columns will be supplied .

ABBREVIATIONS OF RESISTORS, CAPACITORS AND TOLERANCES

| RESISTORS | | CAPACITORS | |
|-----------|--|-----------------|---|
| C R | Carbon Resistor | C CAP. | Ceramic Capacitor |
| F R | Fusible Resistor | E CAP. | Electrolytic Capacitor |
| P R | Plate Resistor | M CAP. | Mylar Capacitor |
| V R | Variable Resistor | CH CAP. | Chip Capacitor |
| HV R | High Voltage Resistor | HV CAP. | High Voltage Capacitor |
| MF R | Metal Film Resistor | MF CAP. | Metalized Film Capacitor |
| MG R | Metal Glazed Resistor | MM CAP. | Metalized Mylar Capacitor |
| MP R | Metal Plate Resistor | MP CAP. | Metalized Polystyrol Capacitor |
| OM R | Metal Oxide Film Resistor | PP CAP. | Polypropylene Capacitor |
| CMF R | Coating Metal Film Resistor | PS CAP. | Polystyrol Capacitor |
| UNF R | Non-Flammable Resistor | TF CAP. | Thin Film Capacitor |
| CH V R | Chip Variable Resistor | MPP CAP. | Metalized Polypropylene Capacitor |
| CH MG R | Chip Metal Glazed Resistor | TAN. CAP. | Tantalum Capacitor |
| COMP. R | Composition Resistor | CH C CAP. | Chip Ceramic Capacitor |
| LPTC R | Linear Positive Temperature Coefficient Resistor | BP E CAP. | Bi-Polar Electrolytic Capacitor |
| | | CH AL E CAP. | Chip Aluminum Electrolytic Capacitor |
| | | CH AL BP CAP. | Chip Aluminum Bi-Polar Capacitor |
| | | CH TAN. E CAP. | Chip Tantalum Electrolytic Capacitor |
| | | CH AL BP E CAP. | Chip Tantalum Bi-Polar Electrolytic Capacitor |

| RESISTORS | | | | | | | | | |
|-----------|-----|-----|------|------|------|--------------|--------------|--------------|-------------|
| F | G | J | K | M | N | R | H | Z | P |
| ±1% | ±2% | ±5% | ±10% | ±20% | ±30% | +30% -10% | +50% -10% | +80% -20% | +100% 0% |

CONTENTS

| | |
|--|----|
| USING P.W. BOARD & REMOTE CONTROL UNIT | 41 |
| EXPLODED VIEW PARTS LIST-I | 41 |
| EXPLODED VIEW-I | 41 |
| EXPLODED VIEW PARTS LIST-II | 42 |
| EXPLODED VIEW-II | 43 |
| | |
| PRINTED WIRING BOARD PARTS LIST [AV-21WS3] | |
| MAIN PW BOARD ASS'Y | 44 |
| | |
| REMOTE CONTROL UNIT PARTS LIST (RM-C1010-1H) | 47 |
| | |
| PRINTED WIRING BOARD PARTS LIST [AV-21WX3] | |
| MAIN PW BOARD ASS'Y | 48 |
| | |
| REMOTE CONTROL UNIT PARTS LIST (RM-C1014-1H) | 52 |
| | |
| PACKING / PACKING PARTS LIST | 53 |

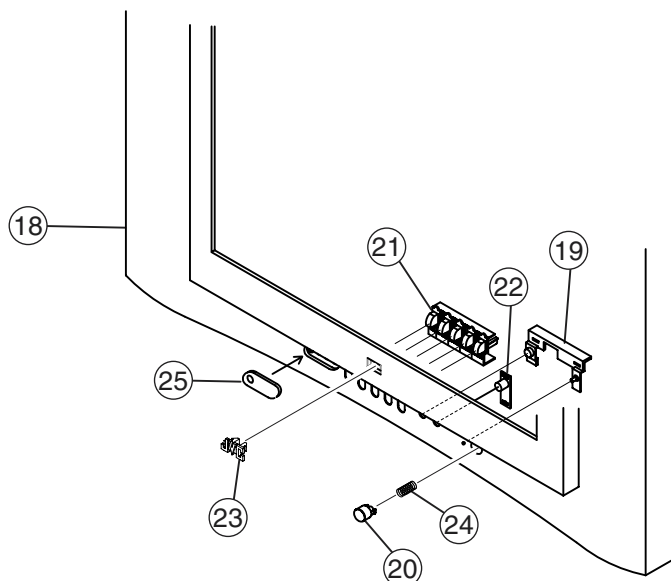
USING P.W. BOARD & REMOTE CONTROL UNIT

| P.W.B ASS'Y | Model | AV-21WS3 | AV-21WX3 |
|-----------------------------------|-------|--------------|--------------|
| MAIN PWB (include CRT SOCKET PWB) | | SCH-1076A-H2 | SCH-1077A-H2 |
| REMOTE CONTROL UNIT | | RM-C1010-1H | RM-C1014-1H |

EXPLODED VIEW PARTS LIST-I

| △ Ref.No. | Part No. | Part Name | Description | Local |
|-----------|----------------|------------------|-------------|-------|
| 18 | GG10198-001A-H | FRONT CABI ASS'Y | [AV-21WS3] | |
| 18 | GG10198-002A-H | FRONT CABI ASS'Y | [AV-21WX3] | |
| 19 | GG30042-001B-H | LED LENS | | |
| 20 | GG30043-001B-H | POWER KNOB | | |
| 21 | GG20022-001A-H | CONTROL KNOB | | |
| 22 | GG30044-001B-H | E.E. WINDOW | | |
| 23 | GG40023-001A-H | JVC MARK | | |
| 24 | CM35235-003-H | SPRING | | |
| 25 | GG30046-001B-H | TERMINAL CAP | | |

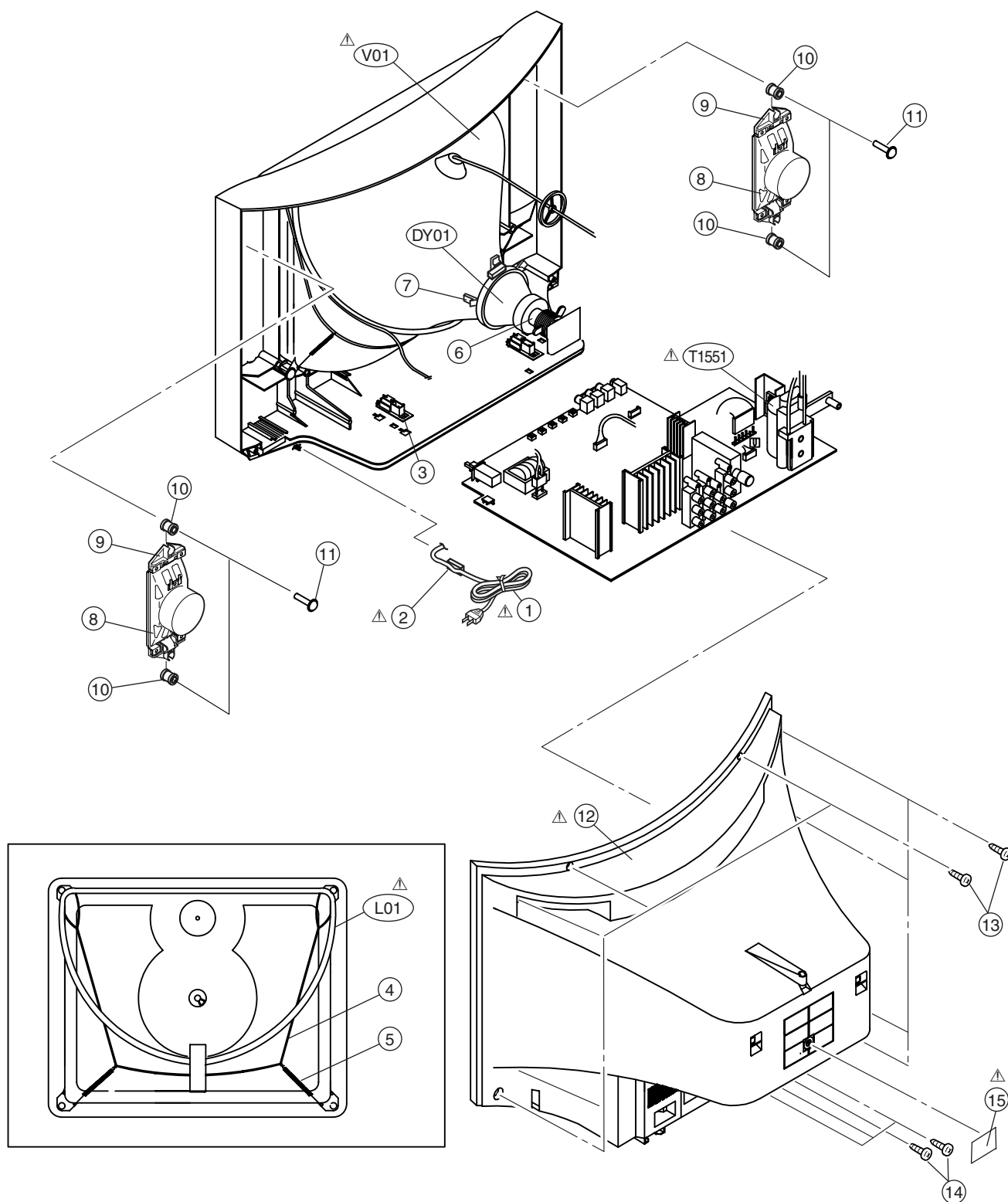
EXPLODED VIEW-I



EXPLODED VIEW PARTS LIST-II

| ⚠ | Ref.No. | Part No. | Part Name | Description | Local |
|---|---------|----------------|-----------------|-----------------|-------|
| ⚠ | V01 | A51LVV896X | PICTURE TUBE | | |
| ⚠ | L01 | QQW0118-001 | DEG COIL | | |
| | DY01 | QQD0082-001 | DEFLECTION YOKE | | |
| ⚠ | T1551 | QQH0137-001 | FBT | | |
| ⚠ | 1 | QMPR340-165-K2 | POWER CORD | | |
| ⚠ | 2 | CM47005-A01-H | CORD CLAMP | | |
| | 3 | CM36623-B01-H | CHASSIS RAIL | (X2) | |
| | 4 | CHGB0028-0A | BRAIDED ASS'Y | | |
| | 5 | A48457-3-H | SPRING | (X2) | |
| | 6 | A75034-B | PC MAGNET | | |
| | 7 | CE40764-00A | WEDGE ASS'Y | (X3) | |
| | 8 | QAS0114-001 | SPEAKER | (X2) SP01, SP02 | |
| | 9 | GG20023-001A-H | SP HOLDER | (X2) | |
| | 10 | LC40226-003A-H | SPACER | (X4) | |
| | 11 | LC40317-002A-H | TAPPING SCREW | (X4) | |
| ⚠ | 12 | GG10187-001B-H | REAR COVER | | |
| | 13 | QYSBSFG4016Z | TAPPING SCREW | (X9) | |
| | 14 | QYSBSF3010Z | TAPPING SCREW | (X4) | |
| ⚠ | 15 | LC20377-001B-H | RATING LABEL | [AV-21WS3] | |
| | | LC20377-010B-H | RATING LABEL | [AV-21WX3] | |

EXPLODED VIEW-II



PRINTED WIRING BOARD PARTS LIST [AV-21WS3]

MAIN PW BOARD ASS'Y(SCH-1076A-H2)

| △ | Symbol No. | Part No. | Part Name | Description | Local |
|---|-----------------|--------------|-----------|---------------|-------|
| | RESISTOR | | | | |
| | R1001-02 | NRSA63J-221X | MG R | 220Ω 1/16W J | |
| | R1003 | NRSA63J-392X | MG R | 3.9kΩ 1/16W J | |
| | R1004 | NRSA63J-221X | MG R | 220Ω 1/16W J | |
| | R1006 | NRSA63J-273X | MG R | 27kΩ 1/16W J | |
| | R1007 | NRSA63J-750X | MG R | 75Ω 1/16W J | |
| | R1101 | NRSA63J-100X | MG R | 10Ω 1/16W J | |
| | R1102 | NRSA63J-682X | MG R | 6.8kΩ 1/16W J | |
| | R1103 | NRSA63J-272X | MG R | 2.7kΩ 1/16W J | |
| | R1104 | NRSA63J-181X | MG R | 180Ω 1/16W J | |
| | R1105 | NRSA63J-220X | MG R | 22Ω 1/16W J | |
| | R1106 | NRSA63J-101X | MG R | 100Ω 1/16W J | |
| | R1107 | NRSA63J-472X | MG R | 4.7kΩ 1/16W J | |
| | R1108-10 | NRSA63J-222X | MG R | 2.2kΩ 1/16W J | |
| | R1111 | NRSA63J-102X | MG R | 1kΩ 1/16W J | |
| | R1112 | NRSA63J-103X | MG R | 10kΩ 1/16W J | |
| | R1117 | NRSA63J-102X | MG R | 1kΩ 1/16W J | |
| | R1119 | NRSA63J-102X | MG R | 1kΩ 1/16W J | |
| | R1120 | NRSA63J-471X | MG R | 470Ω 1/16W J | |
| | R1150 | NRSA63J-331X | MG R | 330Ω 1/16W J | |
| | R1151 | NRSA63J-222X | MG R | 2.2kΩ 1/16W J | |
| | R1152 | NRSA63J-121X | MG R | 120Ω 1/16W J | |
| | R1153 | NRSA63J-122X | MG R | 1.2kΩ 1/16W J | |
| | R1154 | NRSA63J-181X | MG R | 180Ω 1/16W J | |
| | R1301-02 | NRSA63J-222X | MG R | 2.2kΩ 1/16W J | |
| | R1303 | NRSA63J-562X | MG R | 5.6kΩ 1/16W J | |
| | R1304-05 | NRSA63J-222X | MG R | 2.2kΩ 1/16W J | |
| | R1306 | NRSA63J-562X | MG R | 5.6kΩ 1/16W J | |
| | R1351 | NRSA63J-151X | MG R | 150Ω 1/16W J | |
| | R1352 | QRL029J-123 | OM R | 12kΩ 2W J | |
| | R1353 | NRSA63J-182X | MG R | 1.8kΩ 1/16W J | |
| | R1354 | NRSA63J-331X | MG R | 330Ω 1/16W J | |
| | R1355 | NRSA63J-101X | MG R | 100Ω 1/16W J | |
| | R1356 | QRE121J-102Y | C R | 1kΩ 1/2W J | |
| | R1357 | QRZ0107-152Z | C R | 1.5kΩ 1/2W K | |
| | R1358 | QRE121J-105Y | C R | 1MΩ 1/2W J | |
| | R1359 | QRE121J-102Y | C R | 1kΩ 1/2W J | |
| | R1361 | NRSA63J-151X | MG R | 150Ω 1/16W J | |
| | R1362 | QRL029J-123 | OM R | 12kΩ 2W J | |
| | R1363 | NRSA63J-182X | MG R | 1.8kΩ 1/16W J | |
| | R1364 | NRSA63J-331X | MG R | 330Ω 1/16W J | |
| | R1365 | NRSA63J-101X | MG R | 100Ω 1/16W J | |
| | R1366 | QRE121J-102Y | C R | 1kΩ 1/2W J | |
| | R1367 | QRZ0107-152Z | C R | 1.5kΩ 1/2W K | |
| | R1368 | NRSA63J-103X | MG R | 10kΩ 1/16W J | |
| △ | R1369 | QRZ9017-4R7 | F R | 4.7Ω 1/4W J | |
| | R1370 | NRSA63J-151X | MG R | 150Ω 1/16W J | |
| | R1371 | QRL029J-123 | OM R | 12kΩ 2W J | |
| | R1372 | NRSA63J-182X | MG R | 1.8kΩ 1/16W J | |
| | R1373 | NRSA63J-331X | MG R | 330Ω 1/16W J | |
| | R1374 | NRSA63J-101X | MG R | 100Ω 1/16W J | |
| | R1375 | QRE121J-102Y | C R | 1kΩ 1/2W J | |
| | R1376 | QRZ0107-152Z | C R | 1.5kΩ 1/2W K | |
| | R1383 | QRE121J-394Y | C R | 390kΩ 1/2W J | |
| | R1401 | NRSA63J-224X | MG R | 220kΩ 1/16W J | |
| | R1403 | NRSA63J-0R0X | MG R | 0.0Ω 1/16W J | |
| | R1405 | NRSA63J-682X | MG R | 6.8kΩ 1/16W J | |
| | R1406 | NRSA63J-123X | MG R | 12kΩ 1/16W J | |
| | R1408 | NRSA63J-682X | MG R | 6.8kΩ 1/16W J | |
| | R1410 | NRSA63J-123X | MG R | 12kΩ 1/16W J | |
| | R1411 | QRG01GJ-221 | OM R | 220Ω 1W J | |
| | R1412 | QRE121J-1R0Y | C R | 1.0Ω 1/2W J | |
| | R1413 | QRX01GJ-2R7 | MF R | 2.7Ω 1W J | |
| | R1414 | QRE121J-180Y | C R | 18Ω 1/2W J | |
| | R1425 | NRSA63J-683X | MG R | 68kΩ 1/16W J | |
| | R1521 | NRSA63J-101X | MG R | 100Ω 1/16W J | |
| | R1522 | NRSA63J-102X | MG R | 1kΩ 1/16W J | |
| | R1524 | QRL029J-270 | OM R | 27Ω 2W J | |
| | R1526 | QRG01GJ-271 | OM R | 270Ω 1W J | |
| | R1527 | QRL039J-103 | OM R | 10kΩ 3W J | |
| | R1528-29 | QRX029J-R47 | MF R | 4.7Ω 2W J | |
| | R1531 | NRSA63J-222X | MG R | 2.2kΩ 1/16W J | |
| △ | R1532 | QRZ9017-4R7 | F R | 4.7Ω 1/4W J | |

| △ | Symbol No. | Part No. | Part Name | Description | Local |
|---|-----------------|--------------|-----------|---------------|-------|
| | RESISTOR | | | | |
| △ | R1540 | QRZ9021-4R7 | F R | 4.7Ω 1W J | |
| | R1541-42 | QRE121J-154Y | C R | 150kΩ 1/2W J | |
| | R1543 | QRE121J-471Y | C R | 470Ω 1/2W J | |
| | R1545 | QRE121J-220Y | C R | 22Ω 1/2W J | |
| | R1546 | QRE121J-822Y | C R | 8.2kΩ 1/2W J | |
| | R1591 | QRE121J-222Y | C R | 2.2kΩ 1/2W J | |
| | R1592 | QRZ0225-2R2 | UNF R | 2.2Ω | |
| | R1593 | NRSA63J-102X | MG R | 1kΩ 1/16W J | |
| | R1594 | QRE121J-183Y | C R | 18kΩ 1/2W J | |
| | R1595 | NRSA63J-222X | MG R | 2.2kΩ 1/16W J | |
| | R1602 | NRSA63J-271X | MG R | 270Ω 1/16W J | |
| | R1603-04 | NRSA63J-101X | MG R | 100Ω 1/16W J | |
| | R1621-22 | NRSA63J-0R0X | MG R | 0.0Ω 1/16W J | |
| | R1624-25 | NRSA63J-101X | MG R | 100Ω 1/16W J | |
| | R1626-27 | NRSA63J-102X | MG R | 1kΩ 1/16W J | |
| | R1650 | NRSA63J-103X | MG R | 10kΩ 1/16W J | |
| | R1651 | NRSA63J-822X | MG R | 8.2kΩ 1/16W J | |
| | R1654 | NRSA63J-103X | MG R | 10kΩ 1/16W J | |
| | R1655 | NRSA63J-822X | MG R | 8.2kΩ 1/16W J | |
| | R1658-59 | QRE121J-2R2Y | C R | 2.2Ω 1/2W J | |
| | R1660 | NRSA63J-103X | MG R | 2.2kΩ 1/16W J | |
| | R1661 | NRSA63J-683X | MG R | 68kΩ 1/16W J | |
| | R1662 | NRSA63J-333X | MG R | 33kΩ 1/16W J | |
| | R1663 | NRSA63J-103X | MG R | 10kΩ 1/16W J | |
| | R1664 | NRSA63J-222X | MG R | 2.2kΩ 1/16W J | |
| | R1686 | NRSA63J-102X | MG R | 1kΩ 1/16W J | |
| | R1687 | NRSA63J-103X | MG R | 10kΩ 1/16W J | |
| | R1688 | NRSA63J-273X | MG R | 27kΩ 1/16W J | |
| | R1690 | NRSA63J-104X | MG R | 100kΩ 1/16W J | |
| | R1698-99 | NRSA63J-104X | MG R | 100kΩ 1/16W J | |
| | R1701-03 | NRSA63J-101X | MG R | 100Ω 1/16W J | |
| | R1704-06 | NRSA63J-102X | MG R | 1kΩ 1/16W J | |
| | R1707-10 | NRSA63J-472X | MG R | 4.7kΩ 1/16W J | |
| | R1711-14 | NRSA63J-101X | MG R | 100Ω 1/16W J | |
| | R1715-17 | NRSA63J-103X | MG R | 10kΩ 1/16W J | |
| | R1718-19 | NRSA63J-221X | MG R | 220Ω 1/16W J | |
| | R1720 | NRSA63J-102X | MG R | 1kΩ 1/16W J | |
| | R1721-24 | NRSA63J-221X | MG R | 220Ω 1/16W J | |
| | R1725 | NRSA63J-103X | MG R | 10kΩ 1/16W J | |
| | R1726 | NRSA63J-472X | MG R | 4.7kΩ 1/16W J | |
| | R1727 | NRSA63J-104X | MG R | 100kΩ 1/16W J | |
| | R1728 | NRSA63J-103X | MG R | 10kΩ 1/16W J | |
| | R1729 | NRSA63J-470X | MG R | 47Ω 1/16W J | |
| | R1730 | NRSA63J-223X | MG R | 22kΩ 1/16W J | |
| | R1731 | NRSA63J-101X | MG R | 100Ω 1/16W J | |
| | R1732 | NRSA02F-393X | MG R | 39kΩ 1/10W J | |
| | R1733 | NRSA63J-273X | MG R | 27kΩ 1/16W J | |
| | R1734 | NRSA63J-391X | MG R | 390Ω 1/16W J | |
| | R1735 | NRSA63J-104X | MG R | 100kΩ 1/16W J | |
| | R1736 | NRSA63J-333X | MG R | 33kΩ 1/16W J | |
| | R1737 | NRSA63J-272X | MG R | 2.7kΩ 1/16W J | |
| | R1738 | NRSA63J-103X | MG R | 10kΩ 1/16W J | |
| | R1739-41 | NRSA63J-101X | MG R | 100Ω 1/16W J | |
| | R1742 | NRSA63J-0R0X | MG R | 0.0Ω 1/16W J | |
| | R1743 | NRSA63J-102X | MG R | 1kΩ 1/16W J | |
| | R1744 | NRSA63J-561X | MG R | 560Ω 1/16W J | |
| | R1745 | NRSA63J-105X | MG R | 1MΩ 1/16W J | |
| | R1746 | NRSA63J-333X | MG R | 33kΩ 1/16W J | |
| | R1747 | NRSA63J-103X | MG R | 10kΩ 1/16W J | |
| | R1748-49 | NRSA02J-475X | MG R | 4.7MΩ 1/10W J | |
| | R1750 | NRSA63J-0R0X | MG R | 0.0Ω 1/16W J | |
| | R1755-56 | NRSA63J-101X | MG R | 100Ω 1/16W J | |
| | R1757-58 | NRSA63J-222X | MG R | 2.2kΩ 1/16W J | |
| | R1760 | NRSA63J-682X | MG R | 6.8kΩ 1/16W J | |
| | R1770 | QRE121J-271Y | C R | 270Ω 1/2W J | |
| | R1771 | NRSA63J-102X | MG R | 1kΩ 1/16W J | |
| | R1772 | QRE121J-271Y | C R | 270Ω 1/2W J | |
| | R1773 | NRSA63J-102X | MG R | 1kΩ 1/16W J | |
| | R1775 | NRSA63J-332X | MG R | 3.3kΩ 1/16W J | |
| | R1776 | NRSA63J-392X | MG R | 3.9kΩ 1/16W J | |
| | R1777 | NRSA63J-682X | MG R | 6.8kΩ 1/16W J | |
| | R1779 | NRSA63J-272X | MG R | 2.7kΩ 1/16W J | |

| △ | Symbol No. | Part No. | Part Name | Description | Local | △ | Symbol No. | Part No. | Part Name | Description | Local |
|-----------------|------------|--------------|-----------|-------------|---------|------------------|------------|--------------|-----------|-------------|-----------|
| RESISTOR | | | | | | CAPACITOR | | | | | |
| | R1780 | NRSA63J-471X | MG R | 470Ω | 1/16W J | | C1001 | NCB31HK-103X | C CAP. | 0.01μF | 50V K |
| | R1781 | NRSA63J-122X | MG R | 1.2kΩ | 1/16W J | | C1002 | QETN1HM-106 | E CAP. | 10μF | 50V M |
| | R1782 | NRSA63J-181X | MG R | 180Ω | 1/16W J | | C1003 | QFV71HJ-104 | MF CAP. | 0.1μF | 50V J |
| | R1783 | NRSA63J-221X | MG R | 220Ω | 1/16W J | | C1004 | QETN1CM-477 | E CAP. | 470μF | 16V M |
| | R1784 | NRSA63J-331X | MG R | 330Ω | 1/16W J | | C1005 | NCB31HK-222X | C CAP. | 2200pF | 50V K |
| | R1785 | NRSA63J-471X | MG R | 470Ω | 1/16W J | | C1006 | QETN1CM-336 | E CAP. | 33μF | 16V M |
| | R1788 | NRSA63J-333X | MG R | 33kΩ | 1/16W J | | C1007 | NCB31HK-103X | C CAP. | 0.01μF | 50V K |
| | R1803 | NRSA63J-333X | MG R | 33kΩ | 1/16W J | | C1101-05 | NCB31HK-472X | C CAP. | 4700pF | 50V K |
| | R1804-07 | NRSA63J-750X | MG R | 75Ω | 1/16W J | | C1106-07 | NCB31HK-103X | C CAP. | 0.01μF | 50V K |
| | R1808 | NRSA63J-823X | MG R | 82kΩ | 1/16W J | | C1108 | NCB31HK-472X | C CAP. | 4700pF | 50V K |
| | R1809 | NRSA63J-391X | MG R | 390Ω | 1/16W J | | C1109 | QETN1HM-106 | E CAP. | 10μF | 50V M |
| | R1810 | NRSA63J-823X | MG R | 82kΩ | 1/16W J | | C1150-51 | NCB31HK-472X | C CAP. | 4700pF | 50V K |
| | R1811 | NRSA63J-391X | MG R | 390Ω | 1/16W J | | C1308 | NCB31HK-103X | C CAP. | 0.01μF | 50V K |
| | R1812 | NRSA63J-104X | MG R | 100kΩ | 1/16W J | | C1310 | NRSA63J-0R0X | MG R | 0.0Ω | 1/16W J |
| | R1813 | NRSA63J-222X | MG R | 2.2kΩ | 1/16W J | | C1350 | NDC21HJ-471X | C CAP. | 470pF | 50V J |
| | R1815 | NRSA63J-101X | MG R | 100Ω | 1/16W J | | C1351 | NDC31HJ-271X | C CAP. | 270pF | 50V J |
| | R1818 | NRSA63J-222X | MG R | 2.2kΩ | 1/16W J | | C1352 | QETN2EM-475 | E CAP. | 4.7μF | 250V M |
| | R1820 | NRSA63J-101X | MG R | 100Ω | 1/16W J | | C1353 | QETN1CM-107 | E CAP. | 100μF | 16V M |
| | R1821 | NRSA63J-222X | MG R | 2.2kΩ | 1/16W J | | C1360 | NDC21HJ-471X | C CAP. | 470pF | 50V J |
| | R1823 | NRSA63J-101X | MG R | 100Ω | 1/16W J | | C1361 | NDC31HJ-271X | C CAP. | 270pF | 50V J |
| | R1824 | NRSA63J-222X | MG R | 2.2kΩ | 1/16W J | | C1370 | NDC21HJ-471X | C CAP. | 470pF | 50V J |
| | R1826 | NRSA63J-101X | MG R | 100Ω | 1/16W J | | C1371 | NDC31HJ-271X | C CAP. | 270pF | 50V J |
| | R1829 | NRSA63J-750X | MG R | 75Ω | 1/16W J | | C1374 | QFZ0097-103 | MM CAP. | 0.01μF | 1250V K |
| | R1830-31 | NRSA63J-222X | MG R | 2.2kΩ | 1/16W J | | C1401 | QETN1HM-105 | E CAP. | 1μF | 50V M |
| | R1832 | NRSA63J-122X | MG R | 1.2kΩ | 1/16W J | | C1402 | QCB31HK-682 | C CAP. | 6800pF | 50V K |
| | R1833 | NRSA63J-102X | MG R | 1kΩ | 1/16W J | | C1403 | QEHR1VM-227 | E CAP. | 220μF | 35V M |
| | R1834-35 | NRSA63J-562X | MG R | 5.6kΩ | 1/16W J | | C1406 | QFLC2AJ-683Z | M CAP. | 0.068μF | 100V J |
| | R1836 | NRSA63J-750X | MG R | 75Ω | 1/16W J | | C1407 | QCS32HJ-180 | C CAP. | 18pF | 500V J |
| | R1837 | NRSA63J-101X | MG R | 100Ω | 1/16W J | | C1408 | QFV71HJ-184 | MF CAP. | 0.18μF | 50V J |
| | R1838 | QRK126J-121X | C R | 120Ω | 1/2W J | | C1411-12 | NCF21HZ-334X | C CAP. | 0.33μF | 50V Z |
| | R1839-40 | QRE121J-221Y | C R | 220Ω | 1/2W J | | C1413 | QFLC2AJ-563Z | M CAP. | 0.056μF | 100V J |
| | R1841-42 | NRSA63J-0R0X | MG R | 0.0Ω | 1/16W J | | C1422 | QEHR1VM-108 | E CAP. | 1000μF | 35V M |
| | R1843 | NRSA63J-821X | MG R | 820Ω | 1/16W J | | C1521 | QETN1VM-476 | E CAP. | 47μF | 35V M |
| | R1844 | NRSA63J-222X | MG R | 2.2kΩ | 1/16W J | | C1522 | QFLC1HJ-332Z | M CAP. | 3300pF | 50V J |
| | R1845 | NRSA63J-102X | MG R | 1kΩ | 1/16W J | | C1523 | QFLC1HJ-223Z | M CAP. | 0.022μF | 50V J |
| | R1846 | NRSA63J-222X | MG R | 2.2kΩ | 1/16W J | | C1524 | QFZ0196-602 | MPP CAP. | 6000pF | 1.5kVH±3% |
| | R1847 | NRSA63J-103X | MG R | 10kΩ | 1/16W J | | C1525 | QFZ0196-382 | MPP CAP. | 3800pF | 1.5kVH±3% |
| | R1848 | NRSA63J-471X | MG R | 470Ω | 1/16W J | | C1526 | QFP32GJ-393 | PP CAP. | 0.039μF | 400V J |
| | R1849 | NRSA63J-221X | MG R | 220Ω | 1/16W J | | C1527 | QFZ0199-154 | MPP CAP. | 0.15μF | 250V J |
| | R1880 | NRSA63J-202X | MG R | 2.2kΩ | 1/16W J | | C1528 | QFZ0199-124 | MPP CAP. | 0.12μF | 250V J |
| | R1881 | NRSA63J-103X | MG R | 10kΩ | 1/16W J | | C1529 | QEHR2EM-475 | E CAP. | 4.7μF | 250V M |
| | R1882 | NRSA63J-471X | MG R | 470Ω | 1/16W J | | C1530 | QCB32HK-561 | C CAP. | 560pF | 500V K |
| | R1883 | NRSA63J-181X | MG R | 180Ω | 1/16W J | | C1531 | QEHR1EM-108 | E CAP. | 1000μF | 25V M |
| | R1902 | QRF154K-2R2 | UNF R | 2.2Ω | K | | C1533 | QEHR1EM-108 | E CAP. | 1000μF | 25V M |
| | R1904 | QRE121J-681Y | C R | 680Ω | 1/2W J | | C1535 | QCB32HK-101 | C CAP. | 100pF | 500V K |
| | R1905 | QRM034J-R15 | MP R | 1.5Ω | J | | C1536 | QFLC1HJ-103Z | M CAP. | 0.01μF | 50V J |
| | R1907 | NRSA63J-563X | MG R | 56kΩ | 1/16W J | | C1540 | QFV71HJ-104 | MF CAP. | 0.1μF | 50V J |
| | R1908 | QRL039J-333 | OMF R | 33kΩ | 3W J | | C1541-42 | QETN2EM-226 | E CAP. | 22μF | 250V M |
| | R1909 | QRE121J-474Y | C R | 470kΩ | 1/2W J | | C1550 | NCB31CK-104X | C CAP. | 0.1μF | 16V K |
| | R1910 | QRE121J-472Y | C R | 4.7kΩ | 1/2W J | | C1591 | QETN1AM-107 | E CAP. | 100μF | 10V M |
| | R1911 | QRE121J-332Y | C R | 3.3kΩ | 1/2W J | | C1592 | QEZ0203-107 | E CAP. | 100μF | 160V M |
| | R1912 | NRSA63J-152X | MG R | 1.5kΩ | 1/16W J | | C1593 | QETN1EM-476 | E CAP. | 47μF | 25V M |
| | R1913 | IM-BW | BUS WIRE | | | | C1602 | NCB31HK-103X | C CAP. | 0.01μF | 50V K |
| △ | R1915 | QRZ0111-474 | C R | 470kΩ | 1/2W K | | C1603 | QETN1CM-107 | E CAP. | 100μF | 16V M |
| | R1952 | NRSA63J-332X | MG R | 3.3kΩ | 1/16W J | | C1604 | NCB31CK-104X | C CAP. | 0.1μF | 16V K |
| | R1953 | NRSA63J-101X | MG R | 100Ω | 1/16W J | | C1606-07 | NDC31HJ-2R0X | C CAP. | 2.0pF | 50V J |
| | R1957 | QRE121J-8R2Y | C R | 8.2Ω | 1/2W J | | C1608-09 | NCB31HK-103X | C CAP. | 0.01μF | 50V K |
| | R1960 | NRSA63J-391X | MG R | 390Ω | 1/16W J | | C1610 | QETN1HM-106 | E CAP. | 10μF | 50V M |
| | R1961 | QRL029J-223 | OM R | 22kΩ | 2W J | | C1611 | NCB31CK-104X | C CAP. | 0.1μF | 16V K |
| | R1962 | NRSA63J-561X | MG R | 560Ω | 1/16W J | | C1612 | QETN1HM-106 | E CAP. | 10μF | 50V M |
| | R1963 | QRE121J-103Y | C R | 10kΩ | 1/2W J | | C1613 | NCB31CK-104X | C CAP. | 0.1μF | 16V K |
| | R1964 | NRSA63J-473X | MG R | 47kΩ | 1/16W J | | C1615 | QETN1HM-106 | E CAP. | 10μF | 50V M |
| | R1965 | NRSA63J-0R0X | MG R | 0.0Ω | 1/16W J | | C1616 | NCB31CK-104X | C CAP. | 0.1μF | 16V K |
| | R1966 | NRSA63J-682X | MG R | 6.8kΩ | 1/16W J | | C1617 | QETN1HM-106 | E CAP. | 10μF | 50V M |
| | R1967 | NRSA63J-473X | MG R | 47kΩ | 1/16W J | | C1619 | NCB31CK-104X | C CAP. | 0.1μF | 16V K |
| | R1969 | QRT029J-2R7 | MF R | 2.7Ω | 2W J | | C1620 | QETN1HM-106 | E CAP. | 10μF | 50V M |
| | R1970 | NRSA63J-153X | MG R | 15kΩ | 1/16W J | | C1621-22 | NCB31HK-102X | C CAP. | 1000pF | 50V K |
| | R1971 | NRSA63J-183X | MG R | 18kΩ | 1/16W J | | C1625-26 | QETN1HM-475 | E CAP. | 4.7μF | 50V M |
| | R1972 | NRSA63J-391X | MG R | 390Ω | 1/16W J | | C1628 | NCB31HK-472X | C CAP. | 4700pF | 50V K |
| △ | R1991 | QRZ9046-825Z | C R | 8.2MΩ | 1W J | | C1629 | NCB31EK-104X | C CAP. | 0.1μF | 25V K |
| | | | | | | | C1630 | QETN1HM-475 | E CAP. | 4.7μF | 50V M |
| | | | | | | | C1631 | NCB31EK-104X | C CAP. | 0.1μF | 25V K |

| △ Symbol No. | Part No. | Part Name | Description | Local |
|------------------|--------------|-----------|---------------|-------|
| CAPACITOR | | | | |
| C1632-34 | QETN1HM-475 | E CAP. | 4.7μF 50V M | |
| C1635 | QETN1HM-107 | E CAP. | 100μF 50V M | |
| C1636-37 | QETN1HM-475 | E CAP. | 4.7μF 50V M | |
| C1638 | NCB31EK-104X | C CAP. | 0.1μF 25V K | |
| C1639 | NCF21CZ-105X | C CAP. | 1μF 16V Z | |
| C1640 | QETN1HM-475 | E CAP. | 4.7μF 50V M | |
| C1641 | NCB31EK-104X | C CAP. | 0.1μF 25V K | |
| C1642 | NCB31HK-472X | C CAP. | 4700pF 50V K | |
| C1644-45 | QETN1HM-475 | E CAP. | 4.7μF 50V M | |
| C1650 | QEHR1HM-106 | E CAP. | 10μF 50V M | |
| C1651 | QEHR1HM-107 | E CAP. | 100μF 50V M | |
| C1652 | QETN1HM-106 | E CAP. | 10μF 50V M | |
| C1655-56 | QEHQ1VM-108 | E CAP. | 1000μF 35V M | |
| C1659-61 | NCF21HZ-224X | C CAP. | 0.22μF 50V Z | |
| C1662 | QEHR1VM-227 | E CAP. | 220μF 35V M | |
| C1663 | NCF21HZ-224X | C CAP. | 0.22μF 50V Z | |
| C1681-82 | QETN1CM-227 | E CAP. | 220μF 16V M | |
| C1683 | QETN1CM-336 | E CAP. | 33μF 16V M | |
| C1685-86 | NRSA63J-0R0X | MG R | 0.0Ω 1/16W J | |
| C1701 | QETN1CM-227 | E CAP. | 220μF 16V M | |
| C1702 | QETN1HM-106 | E CAP. | 10μF 50V M | |
| C1703-04 | NDC31HJ-220X | C CAP. | 22pF 50V J | |
| C1705 | NCB31HK-102X | C CAP. | 1000pF 50V K | |
| C1706 | NCB21EK-224X | C CAP. | 0.22μF 25V K | |
| C1707 | QETN1CM-107 | E CAP. | 100μF 16V M | |
| C1709 | QETN1CM-107 | E CAP. | 100μF 16V M | |
| C1710 | NCB21EK-224X | C CAP. | 0.22μF 25V K | |
| C1711 | NCB31CK-104X | C CAP. | 0.1μF 16V K | |
| C1713 | NCB31CK-104X | C CAP. | 0.1μF 16V K | |
| C1714 | QETN1CM-476 | E CAP. | 47μF 16V M | |
| C1720 | QETN1CM-476 | E CAP. | 47μF 16V M | |
| C1725 | NCB31HK-681X | C CAP. | 680pF 50V K | |
| C1730-31 | NCB21EK-224X | C CAP. | 0.22μF 25V K | |
| C1732 | QETN1CM-107 | E CAP. | 100μF 16V M | |
| C1733 | NCB31CK-104X | C CAP. | 0.1μF 16V K | |
| C1734-35 | NCB31HK-222X | C CAP. | 2200pF 50V K | |
| C1736-37 | QETN1HM-105 | E CAP. | 1μF 50V M | |
| C1738 | NCB31CK-104X | C CAP. | 0.1μF 16V K | |
| C1739 | NFV41CJ-104X | MPP CAP. | 0.1μF 16V J | |
| C1740 | QETN1HM-225 | E CAP. | 2.2μF 50V M | |
| C1741-42 | NCB31CK-104X | C CAP. | 0.1μF 16V K | |
| C1743 | QETN1CM-107 | E CAP. | 100μF 16V M | |
| C1744 | NCB31HK-102X | C CAP. | 1000pF 50V K | |
| C1745-47 | NCB31EK-473X | C CAP. | 0.047μF 25V K | |
| C1748 | QETN1CM-476 | E CAP. | 47μF 16V M | |
| C1749 | QETN1HM-106 | E CAP. | 10μF 50V M | |
| C1751-53 | NCB31CK-104X | C CAP. | 0.1μF 16V K | |
| C1760 | NCB31HK-104X | C CAP. | 0.1μF 50V K | |
| C1761 | QETN1CM-107 | E CAP. | 100μF 16V M | |
| C1770 | QETN1HM-106 | E CAP. | 10μF 50V M | |
| C1801-04 | QETN1HM-106 | E CAP. | 10μF 50V M | |
| C1805 | NCB31HK-104X | C CAP. | 0.1μF 50V K | |
| C1807-08 | NCF31AZ-105X | C CAP. | 1μF 10V Z | |
| C1810 | NCF31AZ-105X | C CAP. | 1μF 10V Z | |
| C1811 | NCB31HK-104X | C CAP. | 0.1μF 50V K | |
| C1812 | NCF31AZ-105X | C CAP. | 1μF 10V Z | |
| C1813 | NCB31HK-103X | C CAP. | 0.01μF 50V K | |
| C1814 | NCB31HK-104X | C CAP. | 0.1μF 50V K | |
| C1815 | NCF31AZ-105X | C CAP. | 1μF 10V Z | |
| C1817 | NCF31AZ-105X | C CAP. | 1μF 10V Z | |
| C1819 | NCB31HK-104X | C CAP. | 0.1μF 50V K | |
| C1820-21 | NCF31AZ-105X | C CAP. | 1μF 10V Z | |
| C1822 | QETN1CM-477 | E CAP. | 470μF 16V M | |
| C1823-24 | QETN1CM-107 | E CAP. | 100μF 16V M | |
| C1825 | NCB31HK-103X | C CAP. | 0.01μF 50V K | |
| C1826 | NCB31HK-104X | C CAP. | 0.1μF 50V K | |
| C1827 | NCB31HK-103X | C CAP. | 0.01μF 50V K | |
| C1829-31 | NCB31HK-103X | C CAP. | 0.01μF 50V K | |
| C1833 | QETN1HM-226 | E CAP. | 22μF 50V M | |
| C1834 | NDC31HJ-181X | C CAP. | 180pF 50V J | |
| △ C1901 | QFZ9072-104 | MM CAP. | 0.1μF | |
| △ C1902 | QFZ9072-473 | MM CAP. | 0.047μF | |

| △ Symbol No. | Part No. | Part Name | Description | Local |
|------------------|--------------|-----------|-----------------|-------|
| CAPACITOR | | | | |
| C1903-05 | QCZ9015-102Z | C CAP. | 1000pF AC250V Z | |
| △ C1906 | QFZ9072-224 | MM CAP. | 0.22μF | |
| C1907 | QEZ0552-227 | E CAP. | 220μF | |
| C1908 | QFZ0209-222 | MPP CAP. | 2200pF | |
| C1910 | NDC31HJ-471X | C CAP. | 470pF 50V J | |
| C1911 | QEHR1EM-227 | E CAP. | 220μF 25V M | |
| C1914 | QETN1EM-227 | E CAP. | 220μF 25V M | |
| C1915 | QFLC1HJ-152Z | M CAP. | 1500pF 50V J | |
| C1916 | NCB31HK-104X | C CAP. | 0.1μF 50V K | |
| C1952 | QCB32HK-471 | C CAP. | 470pF 500V K | |
| C1953 | QEHQ1VM-108 | E CAP. | 1000μF 35V M | |
| C1954 | NCB31HK-102X | C CAP. | 1000pF 50V K | |
| C1957 | QCB32HK-471 | C CAP. | 470pF 500V K | |
| C1958 | QEHQ1EM-228 | E CAP. | 2200μF 25V M | |
| C1959 | QCZ0122-561 | C CAP. | 560pF 2000V K | |
| C1960 | QEZ0203-107 | E CAP. | 100μF 160V M | |
| C1961 | QETN1CM-107 | E CAP. | 100μF 16V M | |
| C1962 | QETN1HM-106 | E CAP. | 10μF 50V M | |
| C1964 | QETN1CM-476 | E CAP. | 47μF 16V M | |
| C1965 | QETN1CM-107 | E CAP. | 100μF 16V M | |
| C1968 | NCB31CK-104X | C CAP. | 0.1μF 16V K | |
| C1972 | QEHR1VM-476 | E CAP. | 47μF 35V M | |
| C1973 | QEHR1CM-107 | E CAP. | 100μF 16V M | |
| C1974 | NCB31CK-104X | C CAP. | 0.1μF 16V K | |
| C1975 | QEHR1CM-227 | E CAP. | 220μF 16V M | |
| C1976 | QEHR1CM-107 | E CAP. | 100μF 16V M | |
| C1977 | QEHR1AM-477 | E CAP. | 470μF 10V M | |
| C1978 | NCB31HK-104X | C CAP. | 0.1μF 50V K | |
| C1980 | QETN1CM-107 | E CAP. | 100μF 16V M | |
| △ C1991-93 | QCZ9079-102 | C CAP. | 1000pF AC250V M | |

TRANSFORMER

| | | |
|---------|---------------|--------------|
| T1521 | CE40203-00CJ1 | DRIVE TRANSF |
| △ T1551 | QQH0137-001 | FB TRANSF |
| △ T1901 | QQS0165-001 | SW TRANSF |

COIL

| | | | | |
|----------|--------------|----------------|-------|---|
| L1001-02 | CE42050-001Z | BEADS CORE | | |
| L1101 | QQL244J-5R6Z | COIL | 5.6μH | J |
| L1104 | QQL244K-180Z | COIL | 18μH | K |
| L1523 | QQR1005-002 | LINEARITY COIL | | |
| L1524 | QQLZ034-430 | COIL | 43μH | |
| L1601 | QQL244K-4R7Z | COIL | 4.7μH | K |
| L1701-02 | QQL244K-100Z | COIL | 10μH | K |
| L1731-32 | QQL244J-5R6Z | COIL | 5.6μH | J |
| L1951 | QQLZ034-460 | COIL | 46μH | |
| L1953-54 | QQL244J-5R6Z | COIL | 5.6μH | J |

DIODE

| | | | | |
|----------|----------------|-------------|--|--|
| D1101 | DAN235K | DIODE | | |
| D1350-51 | 1SS244 | DIODE | | |
| D1352 | RGP10J-5025-T3 | DIODE | | |
| D1353-56 | MA111 | DIODE | | |
| D1360-61 | 1SS244 | DIODE | | |
| D1370-71 | 1SS244 | DIODE | | |
| D1372 | MA3075/M/-X | ZENER DIODE | | |
| D1401 | RGP10J-5025-T3 | DIODE | | |
| D1402 | MTZJ75 | ZENER DIODE | | |
| D1405 | 1N4003 | DIODE | | |
| D1408 | MA111 | DIODE | | |
| D1521 | ERB06-15-F1 | DIODE | | |
| D1522 | RU3AM-LFC4 | DIODE | | |
| D1523 | RGP10J-5025-T3 | DIODE | | |
| D1541 | RGP10J-5025-T3 | DIODE | | |
| D1550 | MA111 | DIODE | | |
| D1551 | RGP10J-5025-T3 | DIODE | | |
| D1553-54 | RGP10J-5025-T3 | DIODE | | |
| D1592 | MA3075/H/-X | ZENER DIODE | | |
| D1652-53 | MA3330/L/-X | ZENER DIODE | | |
| D1655 | MA111 | DIODE | | |
| D1682 | MA111 | DIODE | | |
| D1702 | MA3024 | ZENER DIODE | | |
| D1703 | MA3051/M/-X | ZENER DIODE | | |

| △ Symbol No. | Part No. | Part Name | Description | Local |
|--------------|---------------|-----------------|-------------|-------|
| DIODE | | | | |
| D1704 | MA3033 | ZENER DIODE | | |
| D1730-33 | MA111 | DIODE | | |
| D1760 | SLR-342VR-T16 | LE DIODE | | |
| D1770 | MA111 | DIODE | | |
| D1771 | P1241-04 | PHOTO CONDUCTOR | | |
| D1801-02 | MA3120/M-X | ZENER DIODE | | |
| D1807-08 | MA3100/M-X | ZENER DIODE | | |
| D1901 | GSIB460 | BRIDGE DIODE | | |
| D1903 | MTZJ12C | ZENER DIODE | | |
| D1904 | EG01C | DIODE | | |
| D1906 | EG01C | DIODE | | |
| D1907 | MA3150/M-X | ZENER DIODE | | |
| D1908 | MTZJ27B | ZENER DIODE | | |
| D1909-10 | MA111 | DIODE | | |
| D1911 | RGP10J-TS-T3 | DIODE | | |
| D1912 | 1SS133 | DIODE | | |
| D1914 | ERC30-02L38 | DIODE | | |
| D1952 | ERC30-02L38 | DIODE | | |
| D1954 | RGP30B-F1 | DIODE | | |
| D1956 | RU3AM-LFC4 | DIODE | | |
| D1964 | MA3330/L-X | ZENER DIODE | | |
| D1965 | 1SS133 | DIODE | | |
| D1966 | MA3068/M-X | ZENER DIODE | | |
| D1968-69 | MA111 | DIODE | | |

TRANSISTOR

| | | | | |
|----------|-----------------|-----------------|--|--|
| Q1101 | 2SC5083/L-P-T | TRANSISTOR | | |
| Q1102-03 | UN2212 | DIGI TRANSISTOR | | |
| Q1104 | 2SB709A/QR/-X | TRANSISTOR | | |
| Q1105-06 | UN2212 | DIGI TRANSISTOR | | |
| Q1108 | 2SD601A/QR/-X | TRANSISTOR | | |
| Q1109 | 2SB709A/QR/-X | TRANSISTOR | | |
| Q1110 | UN2212 | DIGI TRANSISTOR | | |
| Q1111 | 2SD601A/QR/-X | TRANSISTOR | | |
| Q1150 | 2SD601A/QR/-X | TRANSISTOR | | |
| Q1301-02 | 2SB709A/QR/-X | TRANSISTOR | | |
| Q1350 | STC344 | TRANSISTOR | | |
| Q1351 | 2SA1321 | TRANSISTOR | | |
| Q1352 | 2SA1037AK/QR/-X | TRANSISTOR | | |
| Q1360 | STC344 | TRANSISTOR | | |
| Q1361 | 2SA1321 | TRANSISTOR | | |
| Q1370 | STC344 | TRANSISTOR | | |
| Q1371 | 2SA1321 | TRANSISTOR | | |
| Q1521 | 2SC2655/Y-T | TRANSISTOR | | |
| Q1522 | 2SD2634-YD | POW TRANSISTOR | | |
| Q1591 | 2SA1208/ST/Z1-T | TRANSISTOR | | |
| Q1592 | UN2212 | DIGI TRANSISTOR | | |
| Q1660-61 | 2SD601A/QR/-X | TRANSISTOR | | |
| Q1683 | 2SB709A/QR/-X | TRANSISTOR | | |
| Q1684 | 2SB709A/QR/-X | TRANSISTOR | | |
| Q1685-86 | DTC323TK | DIGI TRANSISTOR | | |
| Q1701-02 | 2SA1037AK/QR/-X | TRANSISTOR | | |
| Q1703 | FMC2A | TRANSISTOR | | |
| Q1704 | 2SC2412K/QR/-X | TRANSISTOR | | |
| Q1720 | 2SB709A/QR/-X | TRANSISTOR | | |
| Q1770 | 2SB709A/QR/-X | TRANSISTOR | | |
| Q1801-02 | DTC323TK | DIGI TRANSISTOR | | |
| Q1803 | 2SB709A/QR/-X | TRANSISTOR | | |
| Q1804 | 2SC1740S/QR/-T | TRANSISTOR | | |
| Q1860 | 2SD601A/QR/-X | TRANSISTOR | | |
| Q1861-62 | 2SB709A/QR/-X | TRANSISTOR | | |
| Q1952 | 2SD601A/QR/-X | TRANSISTOR | | |
| Q1953-54 | 2SD601A/QR/-X | TRANSISTOR | | |

IC

| | | | | |
|--------|-----------------|-----------------|-----------|--|
| IC1401 | AN5522 | IC (MONO-ANA) | | |
| IC1601 | MSP3417G | IC (MONO-ANA) | | |
| IC1602 | NJW1138M | IC (MONO-ANA) | | |
| IC1650 | AN5277 | IC (MONO-ANA) | | |
| IC1701 | TDA9365N23S0873 | IC (MICRO-COMP) | | |
| IC1702 | AT24C08-21WS3 | IC (MEMORY-OTH) | (SERVICE) | |
| IC1760 | GP1U281Q | IR DETECT UNIT | | |
| IC1801 | MM1492AF | IC (MONO-ANA) | | |
| IC1901 | STR-F6709A/F7 | IC (HYBRID) | | |
| IC1951 | SE135N | IC (HYBRID) | | |
| IC1972 | R1141Q331B | REGULATE | | |
| IC1974 | AN80T36 | REG IC | | |

| △ Symbol No. | Part No. | Part Name | Description | Local |
|---------------|----------------|-------------------|-------------|---------|
| OTHERS | | | | |
| | LC30114-001C-H | LED HOLDER | | |
| | CM35921-005-H | CDS HOLDER | | |
| CL1001 | QZW0027-002 | WIRE CLAMP | | |
| CL1002 | QZW0027-001 | WIRE CLAMP | | |
| CL1003 | QZW0028-002 | WIRE CLAMP | | |
| CF1106 | QAX0639-001Z | C TRAP | | |
| △ CP1951 | ICP-N75-Y | CIRCUIT PROTECTOR | | |
| △ CP1953 | ICP-N75-Y | CIRCUIT PROTECTOR | | |
| △ F1901 | QMF51E2-4R0J4 | FUSE | | |
| FC1901 | CEMG002-001Z | FUSE CLIP | | |
| J1770 | QNS0155-001 | 3.5 JACK | | |
| J1771 | CEMN072-001 | PIN JACK | | |
| J1772 | CEMN072-002 | PIN JACK | | |
| J1773 | QNN0282-001 | PIN JACK | | |
| J1801 | QNN0349-001 | PIN JACK | | |
| J1802 | QNN0349-002 | PIN JACK | | |
| J1803 | QNN0348-001 | PIN JACK | | |
| J1804 | QNN0349-001 | PIN JACK | | |
| K1350 | QQR1113-001Z | FERRATE BEADS | | |
| K1902 | CE41433-001Z | BEADS CORE | | |
| K1951 | QQR1113-001Z | FERRATE BEADS | | |
| K1954 | QQR1113-001Z | FERRATE BEADS | | |
| K1955 | QQR1214-001Y | FERRATE BEADS | | |
| △ LF1901 | QQR0673-004 | LINE FILTER | | |
| △ LF1902 | QQR1035-002 | LINE FILTER | | |
| △ PC1901 | PC123F2 | IC(PHOTO COUPLE) | | |
| △ RY1901 | QSK0092-001 | RELAY | | |
| S1780 | QSW0619-003Z | TACT SWITCH | MENU | |
| S1781 | QSW0619-003Z | TACT SWITCH | CH- | |
| S1782 | QSW0619-003Z | TACT SWITCH | CH+ | |
| S1783 | QSW0619-003Z | TACT SWITCH | VOL- | |
| S1784 | QSW0619-003Z | TACT SWITCH | VOL+ | |
| △ S1901 | QSW0846-001 | PUSH SWITCH | POWER | |
| SF1101 | QAX0663-001 | SAW FILTER | | |
| SF1102 | QAX0731-001 | SAW FILTER | | |
| △ SK1351 | QNZ0537-001 | CRT SOCKET | | |
| TH1901 | QAD0134-4R5 | P THERMISTOR | | |
| TU1001 | QAU0185-005 | TUNER | | |
| △ VA1901 | ERZV10V621CS | ZNR | | |
| W1008 | NRSA63J-0R0X | MG R | 0.0Ω | 1/16W J |
| W1010 | NRSA63J-0R0X | MG R | 0.0Ω | 1/16W J |
| W1071 | NRSA63J-0R0X | MG R | 0.0Ω | 1/16W J |
| W1096 | NRSA63J-0R0X | MG R | 0.0Ω | 1/16W J |
| W1239 | NRSA63J-0R0X | MG R | 0.0Ω | 1/16W J |
| W1257 | NRSA63J-0R0X | MG R | 0.0Ω | 1/16W J |
| W1307 | NRSA63J-0R0X | MG R | 0.0Ω | 1/16W J |
| W1309 | NRSA63J-0R0X | MG R | 0.0Ω | 1/16W J |
| W1317 | NRSA63J-0R0X | MG R | 0.0Ω | 1/16W J |
| W1322 | NRSA63J-0R0X | MG R | 0.0Ω | 1/16W J |
| W1325-26 | NRSA63J-0R0X | MG R | 0.0Ω | 1/16W J |
| W1330 | NRSA63J-0R0X | MG R | 0.0Ω | 1/16W J |
| W1333 | NRSA63J-0R0X | MG R | 0.0Ω | 1/16W J |
| W1375 | NRSA63J-0R0X | MG R | 0.0Ω | 1/16W J |
| W1379 | NRSA63J-0R0X | MG R | 0.0Ω | 1/16W J |
| W1388 | NRSA63J-0R0X | MG R | 0.0Ω | 1/16W J |
| W1417-18 | NRSA63J-0R0X | MG R | 0.0Ω | 1/16W J |
| W1430 | NRSA63J-0R0X | MG R | 0.0Ω | 1/16W J |
| W1434 | NRSA63J-0R0X | MG R | 0.0Ω | 1/16W J |
| W1436 | NRSA63J-0R0X | MG R | 0.0Ω | 1/16W J |
| X1601 | CE42546-001Z | CRYSTAL | | |
| X1701 | QAX0688-001 | CRYSTAL | | |

REMOTE CONTROL UNIT PARTS LIST (RM-C1010-1H)

| △ Ref.No | Part No. | Part Name | Description | Local |
|----------|----------|---------------|-------------|-------|
| | 25-1168F | BATTERY COVER | | |

PRINTED WIRING BOARD PARTS LIST [AV-21WX3]

MAIN PW BOARD ASS'Y(SCH-1077A-H2)

| △ Symbol No. | Part No. | Part Name | Description | Local | △ Symbol No. | Part No. | Part Name | Description | Local |
|-----------------|--------------|-----------|---------------|-------|-----------------|--------------|-----------|---------------|-------|
| RESISTOR | | | | | RESISTOR | | | | |
| R1001-02 | NRSA63J-221X | MG R | 220Ω 1/16W J | | R1406 | NRSA63J-123X | MG R | 12kΩ 1/16W J | |
| R1003 | NRSA63J-392X | MG R | 3.9kΩ 1/16W J | | R1408 | NRSA63J-682X | MG R | 6.8kΩ 1/16W J | |
| R1004 | NRSA63J-221X | MG R | 220Ω 1/16W J | | R1410 | NRSA63J-123X | MG R | 12kΩ 1/16W J | |
| R1006 | NRSA63J-273X | MG R | 27kΩ 1/16W J | | R1411 | QRG01GJ-221 | OM R | 220Ω 1W J | |
| R1007 | NRSA63J-750X | MG R | 75Ω 1/16W J | | R1412 | QRE121J-1R0Y | C R | 1.0Ω 1/2W J | |
| R1101 | NRSA63J-100X | MG R | 10Ω 1/16W J | | R1413 | QRX01GJ-2R7 | MF R | 2.7Ω 1W J | |
| R1102 | NRSA63J-682X | MG R | 6.8kΩ 1/16W J | | R1414 | QRE121J-180Y | C R | 18Ω 1/2W J | |
| R1103 | NRSA63J-272X | MG R | 2.7kΩ 1/16W J | | R1425 | NRSA63J-683X | MG R | 68kΩ 1/16W J | |
| R1104 | NRSA63J-181X | MG R | 180Ω 1/16W J | | R1521 | NRSA63J-101X | MG R | 100Ω 1/16W J | |
| R1105 | NRSA63J-220X | MG R | 22Ω 1/16W J | | R1522 | NRSA63J-102X | MG R | 1kΩ 1/16W J | |
| R1106 | NRSA63J-101X | MG R | 100Ω 1/16W J | | R1524 | QRL029J-270 | OM R | 27Ω 2W J | |
| R1107 | NRSA63J-472X | MG R | 4.7kΩ 1/16W J | | R1526 | QRG01GJ-271 | OM R | 270Ω 1W J | |
| R1108-09 | NRSA63J-222X | MG R | 2.2kΩ 1/16W J | | R1527 | QRL039J-103 | OM R | 10kΩ 3W J | |
| R1111 | NRSA63J-102X | MG R | 1kΩ 1/16W J | | R1528-29 | QRX029J-R47 | MF R | 4.7Ω 2W J | |
| R1112 | NRSA63J-103X | MG R | 10kΩ 1/16W J | | R1531 | NRSA63J-222X | MG R | 2.2kΩ 1/16W J | |
| R1117 | NRSA63J-102X | MG R | 1kΩ 1/16W J | | △ R1532 | QRZ9017-4R7 | F R | 4.7Ω 1/4W J | |
| R1119 | NRSA63J-102X | MG R | 1kΩ 1/16W J | | △ R1540 | QRZ9021-4R7 | F R | 4.7Ω 1/4W J | |
| R1120 | NRSA63J-471X | MG R | 470Ω 1/16W J | | R1541-42 | QRE121J-154Y | C R | 150kΩ 1/2W J | |
| R1130 | NRSA63J-472X | MG R | 4.7kΩ 1/16W J | | R1543 | QRE121J-471Y | C R | 470Ω 1/2W J | |
| R1131 | NRSA63J-471X | MG R | 470Ω 1/16W J | | R1545 | QRE121J-220Y | C R | 22Ω 1/2W J | |
| R1132 | NRSA63J-222X | MG R | 2.2kΩ 1/16W J | | R1546 | QRE121J-822Y | C R | 8.2kΩ 1/2W J | |
| R1133 | NRSA63J-152X | MG R | 1.5kΩ 1/16W J | | R1591 | QRE121J-222Y | C R | 2.2kΩ 1/2W J | |
| R1134 | NRSA63J-182X | MG R | 1.8kΩ 1/16W J | | R1592 | QRZ0225-2R2 | UNF R | 2.2Ω | |
| R1135 | NRSA63J-561X | MG R | 560Ω 1/16W J | | R1593 | NRSA63J-102X | MG R | 1kΩ 1/16W J | |
| R1136 | NRSA63J-472X | MG R | 4.7kΩ 1/16W J | | R1594 | QRE121J-183Y | C R | 18kΩ 1/2W J | |
| R1137 | NRSA63J-103X | MG R | 10kΩ 1/16W J | | R1595 | NRSA63J-222X | MG R | 2.2kΩ 1/16W J | |
| R1138 | NRSA63J-471X | MG R | 470Ω 1/16W J | | R1621-22 | NRSA63J-0R0X | MG R | 0.0Ω 1/16W J | |
| R1139 | NRSA63J-222X | MG R | 2.2kΩ 1/16W J | | R1624-25 | NRSA63J-101X | MG R | 100Ω 1/16W J | |
| R1140 | NRSA63J-152X | MG R | 1.5kΩ 1/16W J | | R1626-27 | NRSA63J-102X | MG R | 1kΩ 1/16W J | |
| R1141 | NRSA63J-182X | MG R | 1.8kΩ 1/16W J | | R1650 | NRSA63J-103X | MG R | 10kΩ 1/16W J | |
| R1142 | NRSA63J-561X | MG R | 560Ω 1/16W J | | R1651 | NRSA63J-822X | MG R | 8.2kΩ 1/16W J | |
| R1143 | NRSA63J-471X | MG R | 470Ω 1/16W J | | R1654 | NRSA63J-103X | MG R | 10kΩ 1/16W J | |
| R1144 | NRSA63J-220X | MG R | 22Ω 1/16W J | | R1655 | NRSA63J-822X | MG R | 8.2kΩ 1/16W J | |
| R1145 | NRSA63J-821X | MG R | 820Ω 1/16W J | | R1658-59 | QRE121J-2R2Y | C R | 2.2Ω 1/2W J | |
| R1146 | NRSA63J-103X | MG R | 10kΩ 1/16W J | | R1660 | NRSA63J-103X | MG R | 10kΩ 1/16W J | |
| R1147 | NRSA63J-101X | MG R | 100Ω 1/16W J | | R1661 | NRSA63J-683X | MG R | 68kΩ 1/16W J | |
| R1148 | NRSA63J-332X | MG R | 3.3kΩ 1/16W J | | R1662 | NRSA63J-333X | MG R | 33kΩ 1/16W J | |
| R1149 | NRSA63J-471X | MG R | 470Ω 1/16W J | | R1663 | NRSA63J-103X | MG R | 10kΩ 1/16W J | |
| R1155 | NRSA63J-471X | MG R | 470Ω 1/16W J | | R1664 | NRSA63J-222X | MG R | 2.2kΩ 1/16W J | |
| R1301-02 | NRSA63J-222X | MG R | 2.2kΩ 1/16W J | | R1686 | NRSA63J-102X | MG R | 1kΩ 1/16W J | |
| R1303 | NRSA63J-562X | MG R | 5.6kΩ 1/16W J | | R1687 | NRSA63J-103X | MG R | 10kΩ 1/16W J | |
| R1304-05 | NRSA63J-222X | MG R | 2.2kΩ 1/16W J | | R1688 | NRSA63J-273X | MG R | 27kΩ 1/16W J | |
| R1306 | NRSA63J-562X | MG R | 5.6kΩ 1/16W J | | R1690 | NRSA63J-104X | MG R | 100kΩ 1/16W J | |
| R1351 | NRSA63J-151X | MG R | 150Ω 1/16W J | | R1698-99 | NRSA63J-104X | MG R | 100kΩ 1/16W J | |
| R1352 | QRL029J-123 | OM R | 12kΩ 2W J | | R1701-03 | NRSA63J-101X | MG R | 100Ω 1/16W J | |
| R1353 | NRSA63J-182X | MG R | 1.8kΩ 1/16W J | | R1704-06 | NRSA63J-102X | MG R | 1kΩ 1/16W J | |
| R1354 | NRSA63J-331X | MG R | 330Ω 1/16W J | | R1707-10 | NRSA63J-472X | MG R | 4.7kΩ 1/16W J | |
| R1355 | NRSA63J-101X | MG R | 100Ω 1/16W J | | R1711-14 | NRSA63J-101X | MG R | 100Ω 1/16W J | |
| R1356 | QRE121J-102Y | C R | 1kΩ 1/2W J | | R1715-17 | NRSA63J-103X | MG R | 10kΩ 1/16W J | |
| R1357 | QRZ0107-152Z | C R | 1.5kΩ 1/2W K | | R1718-19 | NRSA63J-221X | MG R | 220Ω 1/16W J | |
| R1358 | QRE121J-105Y | C R | 1MΩ 1/2W J | | R1720 | NRSA63J-102X | MG R | 1kΩ 1/16W J | |
| R1359 | QRE121J-102Y | C R | 1kΩ 1/2W J | | R1721-24 | NRSA63J-221X | MG R | 220Ω 1/16W J | |
| R1361 | NRSA63J-151X | MG R | 150Ω 1/16W J | | R1725 | NRSA63J-103X | MG R | 10kΩ 1/16W J | |
| R1362 | QRL029J-123 | OM R | 12kΩ 2W J | | R1726 | NRSA63J-472X | MG R | 4.7kΩ 1/16W J | |
| R1363 | NRSA63J-182X | MG R | 1.8kΩ 1/16W J | | R1727 | NRSA63J-104X | MG R | 100kΩ 1/16W J | |
| R1364 | NRSA63J-331X | MG R | 330Ω 1/16W J | | R1728 | NRSA63J-103X | MG R | 10kΩ 1/16W J | |
| R1365 | NRSA63J-101X | MG R | 100Ω 1/16W J | | R1729 | NRSA63J-470X | MG R | 47Ω 1/16W J | |
| R1366 | QRE121J-102Y | C R | 1kΩ 1/2W J | | R1730 | NRSA63J-223X | MG R | 22kΩ 1/16W J | |
| R1367 | QRZ0107-152Z | C R | 1.5kΩ 1/2W K | | R1731 | NRSA63J-101X | MG R | 100Ω 1/16W J | |
| R1368 | NRSA63J-103X | MG R | 10kΩ 1/16W J | | R1732 | NRSA02F-393X | MG R | 39kΩ | |
| △ R1369 | QRZ9017-4R7 | F R | 4.7Ω 1/4W J | | R1733 | NRSA63J-273X | MG R | 27kΩ 1/16W J | |
| R1370 | NRSA63J-151X | MG R | 150Ω 1/16W J | | R1734 | NRSA63J-391X | MG R | 390Ω 1/16W J | |
| R1371 | QRL029J-123 | OM R | 12kΩ 2W J | | R1735 | NRSA63J-104X | MG R | 100kΩ 1/16W J | |
| R1372 | NRSA63J-182X | MG R | 1.8kΩ 1/16W J | | R1736 | NRSA63J-333X | MG R | 33kΩ 1/16W J | |
| R1373 | NRSA63J-331X | MG R | 330Ω 1/16W J | | R1737 | NRSA63J-272X | MG R | 2.7kΩ 1/16W J | |
| R1374 | NRSA63J-101X | MG R | 100Ω 1/16W J | | R1738 | NRSA63J-103X | MG R | 10kΩ 1/16W J | |
| R1375 | QRE121J-102Y | C R | 1kΩ 1/2W J | | R1739-41 | NRSA63J-101X | MG R | 100Ω 1/16W J | |
| R1376 | QRZ0107-152Z | C R | 1.5kΩ 1/2W K | | R1742 | NRSA63J-0R0X | MG R | 0.0Ω 1/16W J | |
| R1383 | QRE121J-394Y | C R | 390kΩ 1/2W J | | R1743 | NRSA63J-102X | MG R | 1kΩ 1/16W J | |
| R1401 | NRSA63J-224X | MG R | 220kΩ 1/16W J | | R1744 | NRSA63J-561X | MG R | 560Ω 1/16W J | |
| R1403 | NRSA63J-0R0X | MG R | 0.0Ω 1/16W J | | R1745 | NRSA63J-105X | MG R | 1MΩ 1/16W J | |
| R1405 | NRSA63J-682X | MG R | 6.8kΩ 1/16W J | | R1746 | NRSA63J-333X | MG R | 33kΩ 1/16W J | |

| △ Symbol No. | Part No. | Part Name | Description | Local |
|-----------------|--------------|-----------|---------------|-------|
| RESISTOR | | | | |
| R1747 | NRSA63J-103X | MG R | 10kΩ 1/16W J | |
| R1748-49 | NRSA02J-475X | MG R | 4.7MΩ 1/10W J | |
| R1750 | NRSA63J-0R0X | MG R | 0.0Ω 1/16W J | |
| R1755-56 | NRSA63J-101X | MG R | 100Ω 1/16W J | |
| R1757-58 | NRSA63J-222X | MG R | 2.2kΩ 1/16W J | |
| R1760 | NRSA63J-682X | MG R | 6.8kΩ 1/16W J | |
| R1770 | QRE121J-271Y | C R | 270Ω 1/2W J | |
| R1771 | NRSA63J-102X | MG R | 1kΩ 1/16W J | |
| | | | | |
| R1772 | QRE121J-271Y | C R | 270Ω 1/2W J | |
| R1773 | NRSA63J-102X | MG R | 1kΩ 1/16W J | |
| R1775 | NRSA63J-332X | MG R | 3.3kΩ 1/16W J | |
| R1776 | NRSA63J-392X | MG R | 3.9kΩ 1/16W J | |
| R1777 | NRSA63J-682X | MG R | 6.8kΩ 1/16W J | |
| R1779 | NRSA63J-272X | MG R | 2.7kΩ 1/16W J | |
| R1780 | NRSA63J-471X | MG R | 470Ω 1/16W J | |
| R1781 | NRSA63J-122X | MG R | 1.2kΩ 1/16W J | |
| | | | | |
| R1782 | NRSA63J-181X | MG R | 180Ω 1/16W J | |
| R1783 | NRSA63J-221X | MG R | 220Ω 1/16W J | |
| R1784 | NRSA63J-331X | MG R | 330Ω 1/16W J | |
| R1785 | NRSA63J-471X | MG R | 470Ω 1/16W J | |
| R1788 | NRSA63J-333X | MG R | 33kΩ 1/16W J | |
| R1803 | NRSA63J-333X | MG R | 33kΩ 1/16W J | |
| R1804-07 | NRSA63J-750X | MG R | 75Ω 1/16W J | |
| R1808 | NRSA63J-823X | MG R | 82kΩ 1/16W J | |
| | | | | |
| R1809 | NRSA63J-391X | MG R | 390Ω 1/16W J | |
| R1810 | NRSA63J-823X | MG R | 82kΩ 1/16W J | |
| R1811 | NRSA63J-391X | MG R | 390Ω 1/16W J | |
| R1812 | NRSA63J-104X | MG R | 100kΩ 1/16W J | |
| R1813 | NRSA63J-222X | MG R | 2.2kΩ 1/16W J | |
| R1815 | NRSA63J-101X | MG R | 100Ω 1/16W J | |
| R1818 | NRSA63J-222X | MG R | 2.2kΩ 1/16W J | |
| R1820 | NRSA63J-101X | MG R | 100Ω 1/16W J | |
| | | | | |
| R1821 | NRSA63J-222X | MG R | 2.2kΩ 1/16W J | |
| R1823 | NRSA63J-101X | MG R | 100Ω 1/16W J | |
| R1824 | NRSA63J-222X | MG R | 2.2kΩ 1/16W J | |
| R1826 | NRSA63J-101X | MG R | 100Ω 1/16W J | |
| R1829 | NRSA63J-750X | MG R | 75Ω 1/16W J | |
| R1830-31 | NRSA63J-222X | MG R | 2.2kΩ 1/16W J | |
| R1832 | NRSA63J-122X | MG R | 1.2kΩ 1/16W J | |
| R1833 | NRSA63J-102X | MG R | 1kΩ 1/16W J | |
| | | | | |
| R1834-35 | NRSA63J-562X | MG R | 5.6kΩ 1/16W J | |
| R1836 | NRSA63J-750X | MG R | 75Ω 1/16W J | |
| R1837 | NRSA63J-101X | MG R | 100Ω 1/16W J | |
| R1838 | QRK126J-121X | C R | 120Ω 1/2W J | |
| R1839-40 | QRE121J-221Y | C R | 220Ω 1/2W J | |
| R1841-42 | NRSA63J-0R0X | MG R | 0.0Ω 1/16W J | |
| R1843 | NRSA63J-821X | MG R | 820Ω 1/16W J | |
| R1844 | NRSA63J-222X | MG R | 2.2kΩ 1/16W J | |
| | | | | |
| R1845 | NRSA63J-102X | MG R | 1kΩ 1/16W J | |
| R1846 | NRSA63J-222X | MG R | 2.2kΩ 1/16W J | |
| R1847 | NRSA63J-103X | MG R | 10kΩ 1/16W J | |
| R1848 | NRSA63J-471X | MG R | 470Ω 1/16W J | |
| R1849 | NRSA63J-221X | MG R | 220Ω 1/16W J | |
| R1880 | NRSA63J-202X | MG R | 2kΩ 1/16W J | |
| R1881 | NRSA63J-103X | MG R | 10kΩ 1/16W J | |
| R1882 | NRSA63J-471X | MG R | 470Ω 1/16W J | |
| | | | | |
| R1883 | NRSA63J-181X | MG R | 180Ω 1/16W J | |
| R1902 | QRF154K-2R2 | UNF R | 2.2Ω | |
| R1904 | QRE121J-681Y | C R | 680Ω 1/2W J | |
| R1905 | QRM034J-R15 | MP R | 0.15Ω 3W J | |
| R1907 | NRSA63J-563X | MG R | 56kΩ 1/16W J | |
| R1908 | QRL039J-333 | OM R | 33kΩ 3W J | |
| R1909 | QRE121J-474Y | C R | 470kΩ 1/2W J | |
| R1910 | QRE121J-472Y | C R | 4.7kΩ 1/2W J | |
| | | | | |
| R1911 | QRE121J-332Y | C R | 3.3kΩ 1/2W J | |
| R1912 | NRSA63J-152X | MG R | 1.5kΩ 1/16W J | |
| △ R1915 | QRZ0111-474 | C R | 470kΩ 1/2W K | |
| R1952 | NRSA63J-332X | MG R | 3.3kΩ 1/16W J | |
| R1953 | NRSA63J-101X | MG R | 100Ω 1/16W J | |
| R1957 | QRE121J-8R2Y | C R | 8.2Ω 1/2W J | |
| R1960 | NRSA63J-391X | MG R | 390Ω 1/16W J | |
| R1961 | QRL029J-223 | OM R | 22kΩ 2W J | |

| △ Symbol No. | Part No. | Part Name | Description | Local |
|------------------|--------------|-----------|------------------|-------|
| RESISTOR | | | | |
| R1962 | NRSA63J-561X | MG R | 560Ω 1/16W J | |
| R1963 | QRE121J-103Y | C R | 10kΩ 1/2W J | |
| R1964 | NRSA63J-473X | MG R | 47kΩ 1/16W J | |
| R1965 | NRSA63J-0R0X | MG R | 0.0Ω 1/16W J | |
| R1966 | NRSA63J-682X | MG R | 6.8kΩ 1/16W J | |
| R1967 | NRSA63J-473X | MG R | 47kΩ 1/16W J | |
| R1969 | QRT029J-2R7 | MF R | 2.7Ω 2W J | |
| R1970 | NRSA63J-153X | MG R | 15kΩ 1/16W J | |
| | | | | |
| R1971 | NRSA63J-183X | MG R | 18kΩ 1/16W J | |
| R1972 | NRSA63J-391X | MG R | 390Ω 1/16W J | |
| △ R1991 | QRZ9046-825Z | C R | 8.2MΩ 1W J | |
| CAPACITOR | | | | |
| C1001 | NCB31HK-103X | C CAP. | 0.01μF 50V K | |
| C1002 | QETN1HM-106 | E CAP. | 10μF 50V M | |
| C1003 | QFV71HJ-104 | MF CAP. | 0.1μF 50V J | |
| C1004 | QETN1CM-477 | E CAP. | 470μF 16V M | |
| C1005 | NCB31HK-222X | C CAP. | 2200pF 50V K | |
| C1006 | QETN1CM-336 | E CAP. | 33μF 16V M | |
| C1007 | NCB31HK-103X | C CAP. | 0.01μF 50V K | |
| C1101-05 | NCB31HK-472X | C CAP. | 4700pF 50V K | |
| | | | | |
| C1106-07 | NCB31HK-103X | C CAP. | 0.01μF 50V K | |
| C1109 | QETN1HM-106 | E CAP. | 10μF 50V M | |
| C1130-32 | NCB31HK-103X | C CAP. | 0.01μF 50V K | |
| C1133 | QETN1CM-107 | E CAP. | 100μF 16V M | |
| C1134 | NCB31HK-103X | C CAP. | 0.01μF 50V K | |
| C1135 | QETN1AM-477 | E CAP. | 470μF 10V M | |
| C1136-42 | NCB31HK-103X | C CAP. | 0.01μF 50V K | |
| C1143 | QETN1HM-106 | E CAP. | 10μF 50V M | |
| | | | | |
| C1144 | NCB31HK-223X | C CAP. | 0.022μF 50V K | |
| C1308 | NCB31HK-103X | C CAP. | 0.01μF 50V K | |
| C1310 | NRSA63J-0R0X | MG R | 0.0Ω 1/16W J | |
| C1350 | NDC21HJ-471X | C CAP. | 470pF 50V J | |
| C1351 | NDC31HJ-271X | C CAP. | 270pF 50V J | |
| C1352 | QETN2EM-475 | E CAP. | 4.7μF 250V M | |
| C1353 | QETN1CM-107 | E CAP. | 100μF 16V M | |
| C1360 | NDC21HJ-471X | C CAP. | 470pF 50V J | |
| | | | | |
| C1361 | NDC31HJ-271X | C CAP. | 270pF 50V J | |
| C1370 | NDC21HJ-471X | C CAP. | 470pF 50V J | |
| C1371 | NDC31HJ-271X | C CAP. | 270pF 50V J | |
| C1374 | QFZ0097-103 | MM CAP. | 0.01μF 1250V K | |
| C1401 | QETN1HM-105 | E CAP. | 1.0μF 50V M | |
| C1402 | QCB31HK-682 | C CAP. | 6800pF 50V K | |
| C1403 | QEHR1VM-227 | E CAP. | 220μF 35V M | |
| C1406 | QFLC2AJ-683Z | M CAP. | 0.068μF 100V J | |
| | | | | |
| C1407 | QCS32HJ-180 | C CAP. | 18pF 500V J | |
| C1408 | QFV71HJ-184 | MF CAP. | 0.18μF 50V J | |
| C1411-12 | NCF21HZ-334X | C CAP. | 0.33μF 50V Z | |
| C1413 | QFLC2AJ-563Z | M CAP. | 0.056μF 100V J | |
| C1422 | QEHR1VM-108 | E CAP. | 1000μF 35V M | |
| C1521 | QETN1VM-476 | E CAP. | 47μF 35V M | |
| C1522 | QFLC1HJ-332Z | M CAP. | 3300pF 50V J | |
| C1523 | QFLC1HJ-223Z | M CAP. | 0.022μF 50V J | |
| | | | | |
| C1524 | QFZ0196-602 | MPP CAP. | 6000pF 1.5kVH±3% | |
| C1525 | QFZ0196-382 | MPP CAP. | 3800pF 1.5kVH±3% | |
| C1526 | QFP32GJ-393 | PP CAP. | 0.039μF 400V J | |
| C1527 | QFZ0199-154 | MPP CAP. | 0.15μF 250V J | |
| C1528 | QFZ0199-124 | MPP CAP. | 0.12μF 250V J | |
| C1529 | QEHR2EM-475 | E CAP. | 4.7μF 250V M | |
| C1530 | QCB32HK-561 | C CAP. | 560pF 500V K | |
| C1531 | QEHR1EM-108 | E CAP. | 1000μF 25V M | |
| | | | | |
| C1533 | QEHR1EM-108 | E CAP. | 1000μF 25V M | |
| C1535 | QCB32HK-101 | C CAP. | 100pF 500V K | |
| C1536 | QFLC1HJ-103Z | M CAP. | 0.01μF 50V J | |
| C1540 | QFV71HJ-104 | MF CAP. | 0.10μF 50V J | |
| C1541-42 | QETN2EM-226 | E CAP. | 22μF 250V M | |
| C1550 | NCB31CK-104X | C CAP. | 0.1μF 16V K | |
| C1591 | QETN1AM-107 | E CAP. | 100μF 10V M | |
| C1592 | QEZ0203-107 | E CAP. | 100μF 160V M | |

| △ Symbol No. | Part No. | Part Name | Description | Local |
|------------------|--------------|-----------|---------------|-------|
| CAPACITOR | | | | |
| C1593 | QETN1EM-476 | E CAP. | 47μF 25V M | |
| C1625-26 | QETN1HM-475 | E CAP. | 4.7μF 25V M | |
| C1628 | NCB31HK-472X | C CAP. | 4700pF 50V K | |
| C1629 | NCB31EK-104X | C CAP. | 0.1μF 25V K | |
| C1630 | QETN1HM-475 | E CAP. | 4.7μF 50V M | |
| C1631 | NCB31EK-104X | C CAP. | 0.1μF 25V K | |
| C1632-34 | QETN1HM-475 | E CAP. | 4.7μF 50V M | |
| C1635 | QETN1HM-107 | E CAP. | 100μF 50V M | |
| C1636-37 | QETN1HM-475 | E CAP. | 4.7μF 50V M | |
| C1638 | NCB31EK-104X | C CAP. | 0.1μF 25V K | |
| C1639 | NCF21CZ-105X | C CAP. | 1μF 16V Z | |
| C1640 | QETN1HM-475 | E CAP. | 4.7μF 50V M | |
| C1641 | NCB31EK-104X | C CAP. | 0.1μF 25V K | |
| C1642 | NCB31HK-472X | C CAP. | 4700pF 50V K | |
| C1644-45 | QETN1HM-475 | E CAP. | 4.7μF 50V M | |
| C1650 | QEHR1HM-106 | E CAP. | 10μF 50V M | |
| C1651 | QEHR1HM-107 | E CAP. | 100μF 50V M | |
| C1652 | QETN1HM-106 | E CAP. | 10μF 50V M | |
| C1655-56 | QEHQ1VM-108 | E CAP. | 1000pF 35V M | |
| C1659-61 | NCF21HZ-224X | C CAP. | 0.22μF 50V Z | |
| C1662 | QEHR1VM-227 | E CAP. | 220μF 35V M | |
| C1663 | NCF21HZ-224X | C CAP. | 0.22μF 50V Z | |
| C1681-82 | QETN1CM-227 | E CAP. | 220μF 16V M | |
| C1683 | QETN1CM-336 | E CAP. | 33μF 16V M | |
| C1685-86 | NRSA63J-0R0X | MG R. | 0.0Ω 1/16W J | |
| C1701 | QETN1CM-227 | E CAP. | 220μF 16V M | |
| C1702 | QETN1HM-106 | E CAP. | 10μF 50V M | |
| C1703-04 | NDC31HJ-220X | C CAP. | 22pF 50V J | |
| C1705 | NCB31HK-102X | C CAP. | 1000pF 50V K | |
| C1706 | NCB21EK-224X | C CAP. | 0.22μF 25V K | |
| C1707 | QETN1CM-107 | E CAP. | 100μF 16V M | |
| C1709 | QETN1CM-107 | E CAP. | 100μF 16V M | |
| C1710 | NCB21EK-224X | C CAP. | 0.22μF 25V K | |
| C1711 | NCB31CK-104X | C CAP. | 0.1μF 16V K | |
| C1713 | NCB31CK-104X | C CAP. | 0.1μF 16V K | |
| C1714 | QETN1CM-476 | E CAP. | 47μF 16V M | |
| C1720 | QETN1CM-476 | E CAP. | 47μF 16V M | |
| C1725 | NCB31HK-681X | C CAP. | 680pF 50V K | |
| C1730-31 | NCB21EK-224X | C CAP. | 0.22μF 25V K | |
| C1732 | QETN1CM-107 | E CAP. | 100μF 16V M | |
| C1733 | NCB31CK-104X | C CAP. | 0.1μF 16V K | |
| C1734-35 | NCB31HK-222X | C CAP. | 2200pF 50V K | |
| C1736-37 | QETN1HM-105 | E CAP. | 1μF 50V M | |
| C1738 | NCB31CK-104X | C CAP. | 0.1μF 16V K | |
| C1739 | NFV41CJ-104X | MPP CAP. | 0.1μF 16V J | |
| C1740 | QETN1HM-225 | E CAP. | 2.2μF 50V M | |
| C1741-42 | NCB31CK-104X | C CAP. | 0.1μF 16V K | |
| C1743 | QETN1CM-107 | E CAP. | 100μF 16V M | |
| C1744 | NCB31HK-102X | C CAP. | 1000pF 50V K | |
| C1745-47 | NCB31EK-473X | C CAP. | 0.047μF 25V K | |
| C1748 | QETN1CM-476 | E CAP. | 47μF 16V M | |
| C1749 | QETN1HM-106 | E CAP. | 10μF 50V M | |
| C1751-53 | NCB31CK-104X | C CAP. | 0.1μF 16V K | |
| C1760 | NCB31HK-104X | C CAP. | 0.1μF 50V K | |
| C1761 | QETN1CM-107 | E CAP. | 100μF 16V M | |
| C1770 | QETN1HM-106 | E CAP. | 10μF 50V M | |
| C1801-04 | QETN1HM-106 | E CAP. | 10μF 50V M | |
| C1805 | NCB31HK-104X | C CAP. | 0.1μF 50V K | |
| C1807-08 | NCF31AZ-105X | C CAP. | 1μF 10V Z | |
| C1810 | NCF31AZ-105X | C CAP. | 1μF 10V Z | |
| C1811 | NCB31HK-104X | C CAP. | 0.1μF 50V K | |
| C1812 | NCF31AZ-105X | C CAP. | 1μF 10V Z | |
| C1813 | NCB31HK-103X | C CAP. | 0.01μF 50V K | |
| C1814 | NCB31HK-104X | C CAP. | 0.1μF 50V K | |
| C1815 | NCF31AZ-105X | C CAP. | 1μF 10V Z | |
| C1817 | NCF31AZ-105X | C CAP. | 1μF 10V Z | |
| C1819 | NCB31HK-104X | C CAP. | 0.1μF 50V K | |
| C1820-21 | NCF31AZ-105X | C CAP. | 1μF 10V Z | |
| C1822 | QETN1CM-477 | E CAP. | 470μF 16V M | |
| C1823-24 | QETN1CM-107 | E CAP. | 100μF 16V M | |
| C1825 | NCB31HK-103X | C CAP. | 0.01μF 50V K | |
| C1826 | NCB31HK-104X | C CAP. | 0.1μF 50V K | |

| △ Symbol No. | Part No. | Part Name | Description | Local |
|------------------|--------------|-----------|-----------------|-------|
| CAPACITOR | | | | |
| C1827 | NCB31HK-103X | C CAP. | 0.01μF 50V K | |
| C1829-31 | NCB31HK-103X | C CAP. | 0.01μF 50V K | |
| C1833 | QETN1HM-226 | E CAP. | 22μF 50V M | |
| C1834 | NDC31HJ-181X | C CAP. | 180pF 50V J | |
| △ C1901 | QFZ9072-104 | MM CAP. | 0.1μF | |
| △ C1902 | QFZ9072-473 | MM CAP. | 0.047μF | |
| △ C1903-05 | QCZ9015-102Z | C CAP. | 1000pF AV250V Z | |
| △ C1906 | QFZ9072-224 | MM CAP. | 0.22μF | |
| C1907 | QE20552-227 | E CAP. | 220μF | |
| C1908 | QFZ0209-222 | MPP CAP. | 2200pF | |
| C1910 | NDC31HJ-471X | C CAP. | 470pF 50V J | |
| C1911 | QEHR1EM-227 | E CAP. | 220μF 25V M | |
| C1914 | QETN1EM-227 | E CAP. | 220μF 25V M | |
| C1915 | QFLC1HJ-152Z | M CAP. | 1500pF 50V J | |
| C1916 | NCB31HK-104X | C CAP. | 0.1μF 50V K | |
| C1952 | QCB32HK-471 | C CAP. | 470pF 500V K | |
| C1953 | QEHQ1VM-108 | E CAP. | 1000μF 35V M | |
| C1954 | NCB31HK-102X | C CAP. | 1000pF 50V K | |
| C1957 | QCB32HK-471 | C CAP. | 470pF 500V K | |
| C1958 | QEHQ1EM-228 | E CAP. | 2200μF 25V M | |
| C1959 | QCZ0122-561 | C CAP. | 560pF 2000V K | |
| C1960 | QE20203-107 | E CAP. | 100μF 160V M | |
| C1961 | QETN1CM-107 | E CAP. | 100μF 16V M | |
| C1962 | QETN1HM-106 | E CAP. | 10μF 50V M | |
| C1964 | QETN1CM-476 | E CAP. | 47μF 16V M | |
| C1965 | QETN1CM-107 | E CAP. | 100μF 16V M | |
| C1968 | NCB31CK-104X | C CAP. | 0.1μF 16V K | |
| C1972 | QEHR1VM-476 | E CAP. | 47μF 35V M | |
| C1973 | QEHR1CM-107 | E CAP. | 100μF 16V M | |
| C1974 | NCB31CK-104X | C CAP. | 0.1μF 16V K | |
| C1975 | QEHR1CM-227 | E CAP. | 220μF 16V M | |
| C1976 | QEHR1CM-107 | E CAP. | 100μF 16V M | |
| C1977 | QEHR1AM-477 | E CAP. | 470μF 10V M | |
| C1978 | NCB31HK-104X | C CAP. | 0.1μF 50V K | |
| C1980 | QETN1CM-107 | E CAP. | 100μF 16V M | |
| △ C1991-93 | QCZ9079-102 | C CAP. | 1000pF AV250V M | |

TRANSFORMER

| | | |
|---------|---------------|--------------|
| T1521 | CE40203-00CJ1 | DRIVE TRANSF |
| △ T1551 | QQH0137-001 | FB TRANSF |
| △ T1901 | QQS0165-001 | SW TRANSF |

COIL

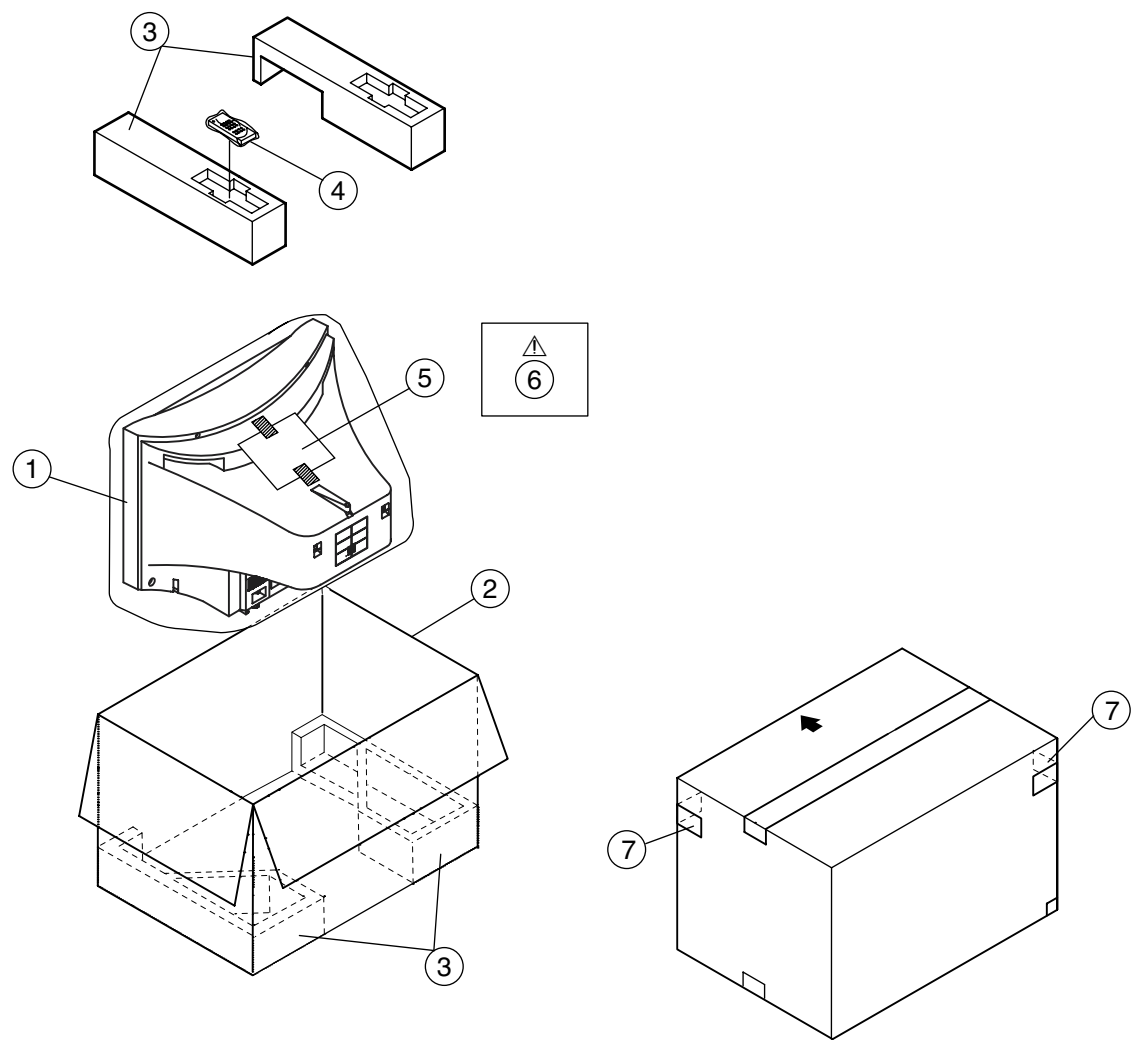
| | | | | |
|----------|--------------|----------------|-------|---|
| L1001-02 | CE42050-001Z | BEADS CORE | | |
| L1101 | QQL244J-5R6Z | COIL | 5.6μH | J |
| L1104 | QQL244K-180Z | COIL | 18μH | K |
| L1523 | QQR1005-002 | LINEARITY COIL | | |
| L1524 | QQLZ034-430 | COIL | 43μH | |
| L1701-02 | QQL244K-100Z | COIL | 10μH | K |
| L1731-32 | QQL244J-5R6Z | COIL | 5.6μH | J |
| L1951 | QQLZ034-460 | COIL | 46μH | |
| L1953-54 | QQL244J-5R6Z | COIL | 5.6μH | J |

DIODE

| | | |
|----------|----------------|-------------|
| D1101 | DAN235K | DIODE |
| D1350-51 | 1SS244 | DIODE |
| D1352 | RGP10J-5025-T3 | DIODE |
| D1353-56 | MA111 | DIODE |
| D1360-61 | 1SS244 | DIODE |
| D1370-71 | 1SS244 | DIODE |
| D1372 | MA3075/M/-X | ZENER DIODE |
| D1401 | RGP10J-5025-T3 | DIODE |

| △ Symbol No. | Part No. | Part Name | Description | Local | △ Symbol No. | Part No. | Part Name | Description | Local |
|-------------------|-----------------|-----------------|-------------|-------|-------------------|-----------------|-------------------|-------------|-------|
| DIODE | | | | | TRANSISTOR | | | | |
| D1402 | MTZJ75 | ZENER DIODE | | | Q1522 | 2SD2634-YD | POW TRANSISTOR | | |
| D1405 | 1N4003 | DIODE | | | Q1591 | 2SA1208/ST/Z1-T | TRANSISTOR | | |
| D1408 | MA111 | DIODE | | | Q1592 | UN2212 | DIGI TRANSISTOR | | |
| D1521 | ERB06-15-F1 | DIODE | | | Q1660-61 | 2SD601A/QR/-X | TRANSISTOR | | |
| D1522 | RU3AM-LFC4 | DIODE | | | Q1683-84 | 2SB709A/QR/-X | TRANSISTOR | | |
| D1523 | RGP10J-5025-T3 | DIODE | | | Q1685-86 | DTC323TK | DIGI TRANSISTOR | | |
| D1541 | RGP10J-5025-T3 | DIODE | | | Q1701-02 | 2SA1037AK/QR/-X | TRANSISTOR | | |
| D1550 | MA111 | DIODE | | | Q1703 | FMC2A | TRANSISTOR | | |
| D1551 | RGP10J-5025-T3 | DIODE | | | Q1704 | 2SC2412K/QR/-X | TRANSISTOR | | |
| D1553-54 | RGP10J-5025-T3 | DIODE | | | Q1720 | 2SB709A/QR/-X | TRANSISTOR | | |
| D1592 | MA3075/H/-X | ZENER DIODE | | | Q1770 | 2SB709A/QR/-X | TRANSISTOR | | |
| D1652-53 | MA3330/L/-X | ZENER DIODE | | | Q1801-02 | DTC323TK | DIGI TRANSISTOR | | |
| D1655 | MA111 | DIODE | | | Q1803 | 2SB709A/QR/-X | TRANSISTOR | | |
| D1682 | MA111 | DIODE | | | Q1804 | 2SC1740S/QR/-T | TRANSISTOR | | |
| D1702 | MA3024 | ZENER DIODE | | | Q1860 | 2SD601A/QR/-X | TRANSISTOR | | |
| D1703 | MA3051/M/-X | ZENER DIODE | | | Q1861-62 | 2SB709A/QR/-X | TRANSISTOR | | |
| D1704 | MA3033 | ZENER DIODE | | | Q1952-54 | 2SD601A/QR/-X | TRANSISTOR | | |
| D1730-33 | MA111 | DIODE | | | IC | | | | |
| D1760 | SLR-342VR-T16 | LE DIODE | | | IC1130 | M52342SP | IC (MONO-ANA) | | |
| D1770 | MA111 | DIODE | | | IC1401 | AN5522 | IC (MONO-ANA) | | |
| D1771 | P1241-04 | PHOTO CONDUCTOR | | | IC1602 | NJW1138M | IC (MONO-ANA) | | |
| D1801-02 | MA3120/M/-X | ZENER DIODE | | | IC1650 | AN5277 | IC (MONO-ANA) | | |
| D1807-08 | MA3100/M/-X | ZENER DIODE | | | IC1701 | TDA9386N22S0868 | IC (MICRO-COMP) | | |
| D1901 | GSIB460 | BRIDGE DIODE | | | IC1702 | AT24C08-21WS3 | IC (MEMORY-OTH) | (SERVICE) | |
| D1903 | MTZJ12C | ZENER DIODE | | | IC1760 | GP1U281Q | IR DETECT UNIT | | |
| D1904 | EG01C | DIODE | | | IC1801 | MM1492AF | IC (MONO-ANA) | | |
| D1906 | EG01C | DIODE | | | IC1901 | STR-F6709A/F7 | IC (HYBRID) | | |
| D1907 | MA3150/M/-X | ZENER DIODE | | | IC1951 | SE135N | IC (HYBRID) | | |
| D1908 | MTZJ27B | ZENER DIODE | | | IC1972 | R1141Q331B | REGULATE | | |
| D1909-10 | MA111 | DIODE | | | IC1974 | AN80T36 | REG IC | | |
| D1911 | RGP10J-TS-T3 | DIODE | | | OTHERS | | | | |
| D1912 | 1SS133 | DIODE | | | | LC30114-001C-H | LED HOLDER | | |
| D1914 | ERC30-02L38 | DIODE | | | | CM35921-005-H | CDS HOLDER | | |
| D1952 | ERC30-02L38 | DIODE | | | CF1106 | QAX0639-001Z | C TRAP | | |
| D1954 | RGP30B-F1 | DIODE | | | CF1130 | QAX0642-001Z | CERAMIC FILTER | | |
| D1956 | RU3AM-LFC4 | DIODE | | | CF1140 | QAX0695-001Z | CERAMIC FILTER | | |
| D1964 | MA3330/L/-X | ZENER DIODE | | | CF1141 | QAX0696-001Z | CERAMIC FILTER | | |
| D1965 | 1SS133 | DIODE | | | CF1142 | QAX0697-001Z | CERAMIC FILTER | | |
| D1966 | MA3068/M/-X | ZENER DIODE | | | CL1001 | QZW0027-002 | WIRE CLAMP | | |
| D1968-69 | MA111 | DIODE | | | CL1002 | QZW0027-001 | WIRE CLAMP | | |
| TRANSISTOR | | | | | CL1003 | QZW0028-002 | WIRE CLAMP | | |
| Q1101 | 2SC5083/L-P/-T | TRANSISTOR | | | △ CP1951 | ICP-N75-Y | CIRCUIT PROTECTOR | | |
| Q1102 | UN2212 | DIGI TRANSISTOR | | | △ CP1953 | ICP-N75-Y | CIRCUIT PROTECTOR | | |
| Q1104 | 2SB709A/QR/-X | TRANSISTOR | | | F1901 | QMF51E2-4R0J4 | FUSE | | |
| Q1105-06 | UN2212 | DIGI TRANSISTOR | | | FC1901 | CEMG002-001Z | FUSE CLIP | | |
| Q1108 | 2SD601A/QR/-X | TRANSISTOR | | | J1770 | QNS0155-001 | 3.5 JACK | | |
| Q1109 | 2SB709A/QR/-X | TRANSISTOR | | | J1771 | CEMN072-001 | PIN JACK | | |
| Q1110 | UN2212 | DIGI TRANSISTOR | | | J1772 | CEMN072-002 | PIN JACK | | |
| Q1111 | 2SD601A/QR/-X | TRANSISTOR | | | J1773 | CEMN072-003 | PIN JACK | | |
| Q1130 | 2SB709A/QR/-X | TRANSISTOR | | | J1801 | QNN0349-001 | PIN JACK | | |
| Q1131 | UN2212 | DIGI TRANSISTOR | | | J1802 | QNN0349-002 | PIN JACK | | |
| Q1132 | 2SD601A/QR/-X | TRANSISTOR | | | J1803 | QNN0348-001 | PIN JACK | | |
| Q1133 | 2SB709A/QR/-X | TRANSISTOR | | | J1804 | QNN0349-001 | PIN JACK | | |
| Q1134-35 | UN2212 | DIGI TRANSISTOR | | | K1350 | QQR1113-001Z | FERRATE BEADS | | |
| Q1136-37 | 2SD601A/QR/-X | TRANSISTOR | | | K1902 | CE41433-001Z | BEADS CORE | | |
| Q1138 | UN2212 | DIGI TRANSISTOR | | | K1951 | QQR1113-001Z | FERRATE BEADS | | |
| Q1301-02 | 2SB709A/QR/-X | TRANSISTOR | | | K1954 | QQR1113-001Z | FERRATE BEADS | | |
| Q1350 | STC344 | TRANSISTOR | | | K1955 | QQR1214-001Y | FERRATE BEADS | | |
| Q1351 | 2SA1321 | TRANSISTOR | | | △ LF1901 | QQR0673-004 | LINE FILTER | | |
| Q1352 | 2SA1037AK/QR/-X | TRANSISTOR | | | △ LF1902 | QQR1035-002 | LINE FILTER | | |
| Q1360 | STC344 | TRANSISTOR | | | △ PC1901 | PC123F2 | IC(PHOTO COUPLE) | | |
| Q1361 | 2SA1321 | TRANSISTOR | | | △ RY1901 | QSK0092-001 | RELAY | | |
| Q1370 | STC344 | TRANSISTOR | | | △ S1780 | QSW0619-003Z | TACT SWITCH | | MENU |
| Q1371 | 2SA1321 | TRANSISTOR | | | | | | | |
| Q1521 | 2SC2655/Y/-T | TRANSISTOR | | | | | | | |

PACKING



PACKING PARTS LIST

| △ Ref.No. | Part No. | Part Name | Description | Local |
|-----------|----------------|--------------|-------------|-------|
| 1 | CP30967-003-H | POLY BAG | | |
| 2 | GG10044-042A-H | P CASE | | |
| 3 | GG10188-001A-H | CUSHION ASSY | | |
| 4 | RM-C1010-1H | RC HAND UNIT | [AV-21WS3] | |
| 4 | RM-C1014-1H | RC HAND UNIT | [AV-21WX3] | |
| 5 | CP30966-001-H | POLY BAG | | |
| △ 6 | LCT1170-001A-H | INST BOOK | | |
| 7 | GG20012-001A-H | CORNER LABEL | (x2) | |

SERVICE NOTE :

This image shows a single sheet of white paper with horizontal ruling lines. The lines are evenly spaced and run across the width of the page. There are no margins, text, or other markings on the paper.